



OPUNAKE & COASTAL NEWS

Vol. 29 No 20, December 3, 2020
www.opunakecoastalnews.co.nz

Published every
Thursday Fortnight
Phone and Fax 761-7016
A/H 761-8206
for Advertising and Editorial
ISSN 2324-2337, ISSN 2324-2345

Inside



Where to now for closed Manaia buildings. Page 7



Opunake guinea pig for new banking trial. P 11.



A hands up for aspiring boxers. P14, 15



A Kick in the Baubles, a lot of fun. Page 23



New manager and new name for Pukeiti Cafe Page 26.



A Christmas gift from Bob. See film reviews page 27.

Local news, local people, local businesses, local sport, local arts and events.
Delivered free around the mountain every fortnight.

editorial@opunakecoastalnews.co.nz
ads@opunakecoastalnews.co.nz
accounts@opunakecoastalnews.co.nz
Phone: 06 761 7016
23 Napier St, Opunake

OPUNAKE & COASTAL NEWS

Christmas Parade attracts big crowd

The Okato Christmas Parade held on November 29, setting off down Carthew Street at 6.30pm, was watched by a huge crowd of onlookers. The iconic event was hosted by the Okato Community Church and was well-organized. Maori wardens ensured that onlookers were off the road, although it has to be said, they were kept busy by excited children.

The parade was headed by a police car, sirens blaring and lights flashing. They were closely followed by pipers and drummers playing *Scotland the Brave*. Several children were close behind with banners bearing the name of the music. The fire brigades of Ngamotu and Okato were represented and were accompanied by occasional bursts of their sirens.

There were about 15 floats with many community groups and clubs represented. Predictably, Santa made a popular appearance accompanied by two reindeer.

The Okato Lions' float featured a huge kiwi and an attached sign notified that it was their 50th anniversary (1970-2020).

Okato Vets, peopled by a number of cow/people, wished us a Moo-ry Christmas. The float was judged fifth in the competition.



The impressive Okato Historic Society float came third in the competition.

Coastal Taranaki School was well represented by their imaginative float, which had an unbelievable number of blue and white balloons. They were

judged the overall winner of the competition.

With their nativity theme St Patricks church were fourth in the competition.

Many Coastal Motocross

riders zooming along were a popular sight. They were runners up in the competition.

The Okato and District Historical Society float was intriguing and took third place.

Harold the friendly giraffe of Life Education Trust made his usual appearance, waving vigorously at the crowd.

One family from Opunake watched enthusiastically. Jimmy particularly enjoyed the motocross riders. His

brother George especially appreciated Santa making an appearance. Natasha, who said the parade was "amazing" was keen on Harold. Their father Zac said it was the first Okato Christmas they had attended and was impressed that it was a "good family event."

After the parade completed two circuits of Okato the event concluded with a sausage sizzle, burgers and other treats at the Coastal Taranaki School gymnasium.



The motocross riders captured many hearts. They were judged runner up in the competition.

Poll provision an unnecessary anomaly

The Taranaki Regional Council has said it will join other councils across New Zealand in pushing for the removal of the ability for electors to force a ratepayer poll on any proposal by a council to create a Māori constituency or ward. The Policy and Planning Committee supported a recommendation for the

Council to formally endorse calls by Local Government NZ for the removal of the poll provisions, which are seen as an anomaly because there is no such provision for any other decision taken by councils. The Committee was told that any objections to Māori representation proposals should be handled by the Local Government

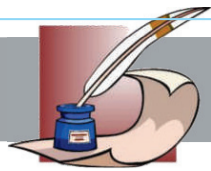
Commission, which already handles objections to any other proposals relating to representation arrangements. The Minister of Local Government, the Hon Nanaia Mahuta, has signalled her support for removing the poll provision, and reportedly intends to introduce the necessary amendment this term.

local market
est 2018

LOCAL FARM PRODUCE

Strawberries *LOCAL* 2 for \$5
Broccoli *LOCAL* 2 for \$3
PICK n MIX Stone Fruit/kg \$5.99
Hawke's Bay Nectarines, Peaches, Apricots
Green Kiwifruit/kg \$1.99
Avocados 3 for \$5

facebook.com/LocalMarketOpunake
52 Tasman Street, Opunake
Specials Valid To 15 December While Stocks Last



Letters to the Editor

Send your your views to:
Letters to the Editor
 23 Napier Street, Opunake.
 Fax: (06) 761 7016

email: editorial@opunakecoastalnews.co.nz
 You are welcome to use a pseudonym but must supply your name and address to us.

"Let's create your business growth strategy together"
 Your only local community accounting firm



HUGHSON & ASSOCIATES
 Accounting for the future, today
 Hawera - Opunake - Patea - 06 278 4169
 Opunake Office hours:
 Mon & Thurs: 9am-3pm, Wed: 10am-3pm

RENTAL VEHICLES



- CHARTER BUSES
- VANS
- TOUR BUSES

ALUMINIUM SCAFFOLDING FOR HIRE

\$35 per day, \$50 weekend.

More than 6 days \$30 per day.

WATERBLASTER FOR HIRE

Petrol 3000 psi 15L/minC

Cost: Half day \$90, Full day \$120, Weekend \$130. Friday after 3pm return Monday 9am.

Bond for waterblaster and scaffolding \$50.

For more information contact Tracey or Christine at

PICKERING MOTORS

11 TENNYSON ST OPUNAKE PH (06) 761-8363
 0800 22 11 20 Email: pickering.motors@xtra.co.nz

OPUNAKE & COASTAL NEWS

Registered office: 23 Napier Street, PO Box 74, Opunake

Phone: Office (06) 761-7016, A/h (06) 761-8206

For advertising, email: ads@opunakecoastalnews.co.nz
 For editorial, email: editorial@opunakecoastalnews.co.nz
 For accounts, email: accounts@opunakecoastalnews.co.nz

www.opunakecoastalnews.co.nz

Editor: Bernice McKellar

Journalists/Sales: Rolland McKellar, Bryan Kirk

Advertising/Production: Vanessa Smith

Production/IT: Shane Butler

Delivery: Thursday, fortnightly

Registered as a newspaper.

Member of the Community Newspapers Association of New Zealand



The Opunake and Coastal News is distributed free to every home and business within the rural area bounded in the north by the New Plymouth city border, extending east to Egmont Village, and around to the edge of Stratford, south to the Hawera city border and inland to Kaponga and through Eltham.

STDC Maori Ward

I spoke against a Maori Ward at the South Taranaki District Council Maori Ward meeting. We are all New Zealanders in this country.

Why have a small group of New Zealanders been given the privilege of having their own Maori Ward. They also have an Iwi Liaison Committee.

Any New Zealander over the age of 18 living in the STDC area can stand for election in the council. If they are concerned about what the council is doing, speak to any councillor or the Mayor. They can go to a council meeting and speak at the start about their problem.

A councillor should represent everybody regardless of race. The present council has done a good job up to this meeting when they made a bad mistake and lost the goodwill of the community by agreeing to lobby the Government to change the law that allows decisions about Maori representation to be overturned by a citizen-initiated referendum. This is a vote against Democracy taking away the rights of the people they represent to oppose a decision they make.

People in this area went to war and some gave their lives to fight for Democracy. A council that wants to take away its citizens' rights to oppose is not wanted in South Taranaki. We need to look for residents who believe in Democracy to stand in the next election.

Carroll J. Walsh
 Hawera

Little School neglected

After a look at the photograph of Otakeho's old historical school, I wasn't very impressed one bit, simply because whoever the tenant is hasn't done anything about keeping it clean and tidy, as it is right full of high grass, no doubt plenty of weeds all over the grounds, and the building itself looks terrible and unpainted. It looks so dilapidated it is in a really great need of an extremely huge makeover..

Otakeho's community chairman Kelvin Putt along with local iwi Ngaruahine also aren't very happy as in 18 months their community hall celebrates its 125th anniversary, and according to the South Taranaki District Council the garden festivals were about to begin, while other closed schools in the area are already being looked after and everything looks great, but for Otakeho's historical school.

Remember these old schools around the coast which have been closed down are great tourist attractions, and their communities can easily cash in on such an attraction. If any historical schools like these were overseas, they would all be quickly locked down and forgotten about, with people only seeing photos of these and not the real thing. I am saying to these tenants, isn't it high time they just got their act together pronto? Otherwise other tenants could be found who really care about historic schools and buildings

Tom Stephens
 New Plymouth

Let's get rid of plastics

One must congratulate all of those 2020 Environmental

Award winners on their great work which does give our province something to feel good about, but every one of us must continue this great work, otherwise we'll see our streams, lakes, rivers, beach frontages and our oceans will become filled with unwanted rubbish, as seen on TV that a particular ocean's bottom was literally floating in all types of rubbish, which included plastic rubbish.

In seeing the photo of Marlborough's Des Watson, who has been travelling around New Zealand cleaning up beaches, streets and other places getting rid of unwanted smelly rubbish, and has recently been in Opunake, he has collected quite a bit of rubbish along Opunake's coastline.

I know people have won environmental awards, but isn't it high time people look around our own beach frontages? I believe it is. OK we can easily look after land, but we must not forget our coastlines, so come on everyone, don't litter our beaches. If having any type of rubbish, look for rubbish bins instead of just throwing rubbish on the ground and walking away.

Polluting our earth is not on, so if we all want our planet Earth to survive, we must

continue to keep it clean, otherwise we will have no earth at all, just one smelly piece of nothing.

Tom Stephens
 New Plymouth

Have you been there?

Wow, I visited Tongaporutu and the North Taranaki Three Sisters rock formations, which I have not been to for 40 years although I spent many visits to the White Cliffs area.

After a very short walk along the beach coastline, wow spectacular beauty met my eyes and camera.

It reminded me how lucky we are to live in Taranaki with attractions like this for all Taranaki people to visit this sort of place to take in and not just leave this for our visitors from out of the province. Absolutely stunning. Well worth a journey.

Then returning to the Tongaporutu Carpark, we were rewarded with two beautiful cafes for a coffee and a piece of fresh fish from the very cheerful staff. Thank-you, even if we were not from Auckland.

Ian McAlpine
 New Plymouth



Tongaporutu and the North Taranaki Three Sisters rock formations,

Deadlines for copy

We find we are working very late on a Tuesday night to put the paper together for it to be at the printers first thing Wednesday morning.

Our deadline for copy is Monday 10am.

This gives us an opportunity to proofread the copy.

We continue to receive a lot of material on Tuesday and are struggling to process it all as well as put together the paper.

If you have trouble meeting this deadline can you let us know.

This deadline does not apply to the Cops and Fire

Service columns where incidents can occur on the Monday and Tuesday.

We do appreciate your contributions, so thank you in advance for your co-operation.

Editor

Opunake & Coastal News
 Paste Up Night



Opunake place names

(Notes produced by J.S. Stronge)

The first survey of the Opunake Township area was made in October 1867 by Nelson Carrington. It was not until 1879-80, however, that a complete and comprehensive survey was completed - this time by C. Finnerty.

The origins of some of the place names in the Township are as follows:

Heaphy Road

Is named for Major Charles Heaphy the only colonist to be awarded a Victoria Cross. The son of a clever artist on Lord Wellington's staff, Major Heaphy was born in

1822 and died in Brisbane in 1881. An artist of considerable merit he was appointed draughtsman to the New Zealand Company and came to New Zealand in the Tory. He took part in many of the early explorations of New Zealand. In turn he was goldfields commissioner, district surveyor and volunteer soldier in the New Zealand Wars where at Waiari he was awarded the Victoria Cross for attending a wounded comrade under heavy fire and at great personal risk. Later he was chief surveyor at Auckland, MHR for Parnell and judge of the Native Land Court.

Locals turn out in force for Okato Christmas Parade



Clockwise from right: Coastal Taranaki School won the competition with this remarkable float. One question - how on earth did they manage to inflate so many balloons?

A popular sight in Okato is Glenis and her horse and wagon giving lucky people a ride.

Enjoying the Okato Christmas Parade was this family group. From left are Natasha, Jimmy and George with Dad Zac Foote. Natasha thought the Parade was "amazing."



ADELPHOS

Dog Gone It!

Losing a beloved pet can be a sad time. From the first day we met I became aware of the short life that our first dog Penelope would have, by human standards. Many of you, from your own experience, will immediately understand the grief of losing your own pet. But, sometimes bereaved pet owners have been criticised with the clichés, "For Pete's sake, it was only a bloomin' dog!" or

"It's just a bloody cat!" But such profound grief deserves better than cold and flippant dismissals.

Since there are so many kinds of pets, this article will focus on man's best friend—our dogs. Apologies to cat lovers. I will mention, however, that research tells us that women who only own cats typically suffer more than male or female dog owners when their pet

dies; possibly because dog owners may be more socially connected as they walk their dogs and meet other dog owners who can grieve with them. Have you noticed many people walking their cats?

If God is the source of all love, one wonders if the letters in the word dog could be reversed—GOD. After all, my dog watches over me when I'm sad or happy and follows me around constantly

desiring to be in my presence. My ten year old border collie, Marley, can't use words. But she speaks to me in a bond of silence beyond words as she glances upwards and then lies down at my feet. Sometimes God's Holy Spirit speaks and comforts us in a silence beyond words.

Will our previous pet dogs be with us in heaven? The Bible isn't clear. But here's an observation: God didn't kick animals out of

The Garden of Eden, only Adam and Eve. Our first parents were expelled not only for their disobedience in believing Satan but for their desire to become their own god (Genesis 3:5-6). Sound familiar? But the good news is that when Jesus returns God clearly promises that He will re-create an entire and eternal new world (Revelation 21:1 and Isaiah 65:17).

A grieving ten year old boy

asked his mum why his much loved dog, Archie, lived such a short time. Mum answered, "Archie had to squeeze a human lifetime of dog love into your heart in nine short years, son." The lad could only tearfully sob and say "But it's still not fair, mum."

No, it's not fair. But God is a source of comfort in our time of loss and grief, even for our pets. Thank God for our dog friends and other pets too.

Adelphos

CARING FOR YOUR COMMUNITY



INGRAM'S
PROUD TO BE LOCALLY OWNED & OPERATED

PHONE
(06) 278 4786
Bin & Skip Hire



HAWERA KITCHENS.
THE KITCHEN BROTHERS.

Contact Klint or Lance
24 Glover Rd, Hawera | 06 278 7044
info@haverakitchens.co.nz

Extra buses to run as Christmas shopping ramps up

Extra Saturday bus services are on the way to eliminate traffic and parking hassles for families caught up in the Christmas shopping rush.

For the next three Saturdays, extra bus services will run on Citylink routes throughout New Plymouth as well as from

Bell Block and Waitara, and on The Connector service linking Opunake and Hāwera with New Plymouth via Normanby, Eltham, Midhirst, Stratford, Inglewood and Egmont Village.

Up to six Saturday services will run for those in New

Plymouth, Bell Block or Waitara, plus a morning service from Opunake through to Hāwera and on to New Plymouth, returning in the afternoon.

“It’s an ideal way for Christmas shoppers to avoid traffic and parking hassles,”

says Chris Clarke, Transport Services Manager for the Taranaki Regional Council which provides the services through its contractors Tranzit Coachlines and Pickering Motors.

“The annual gift-buying pilgrimage can be a fun

family outing on the bus, rather than an ordeal in a hot car crawling through thick traffic only to find no parking handy to town.

“If you’ve never given the buses a go before, this might be the time to try.”

Chris says the services are

part of the Council’s focus on improving lifestyles for Taranaki people. “If these services are well supported, we will be able to offer more in future years.”

AEA STAINLESS Jetter Tubs

From the odd bolts box

Repair, replace, rebuild mild and stainless steels, bolts, pins, bushes, washers or start from scratch!

Concrete cutting, yard galvanised pole repairs and same day service!

111A TASMAN ST, OPUNAKE
PH: 06 761 8834

A Christmas cake to cherish

After the feedback I’ve had regarding the Apple Spice Cake recipe I put in the paper (an advertiser on Friday said she had made it three times) I thought I would share a recipe given to me by a cousin some years ago with whom I was spending Christmas. So impressed was I with the Christmas Cake she made I asked if I could have the recipe.

I have made it often since (indeed I’ve never used another Christmas Cake recipe since) not just for Christmas but for birthdays etc.

It’s quite a moist cake and never fails to get lots of compliments.

Soak overnight:

1 kg of mixed fruit (I usually stick to a combination of sultanas, raisins and currents

– I’m always a bit suspicious of the red and green things you get in mixed fruit and orange peel etc and I never think nuts belong in cakes!).

Add 2 cups of sugar.

Soak the above in a small bottle of raspberry fizz overnight.

Cream 225g butter and 1 tbsp of milk powder.

Beat in 4 eggs.

Add two and a half cups

of flour and 1 tsp baking powder.

Mix in with the fruit mixture.

Line tin with two layers of paper.

Bake 3-4 hours@120 degrees Celsius

The cake can be iced with butter icing or with almond and royal icing.

Editor

Are you playing the goat?



An unusual friendship.

Thank you Gail Simmons of Stoney Oaks, Inglewood for supplying the enchanting photograph.

Hipp Accounting Limited
If you find yourself spending too much time on administration/ accounting and not enough on what earns you money, it is time to call **Hipp Accounting**
Phone: 06 928 5608
Mobile: 027 610 0270
365 Ketemarae Road, Rd15, Hawera 4675
www.hippaccounting.co.nz

You can **rely on us** for your **energy needs** www.rockgastaranaki.co.nz

Transform your home - all your hot water, space heating and cooking needs from your trusted local Rockgas supplier.

Count on us - reliable delivery of 45kg LPG cylinders to your home, business, or farm where ever you live.

Locally operated and proud to be part of your community

rockgas TARANAKI

Call Rockgas Taranaki
0800 LPG 2 YOU or 06 757 9264

INSTALL RETRACTABLE INSECT SCREENS FOR A BUG FREE, SPRAY FREE HOME

Window handles, seals, hinges & stays • Security locks for windows & doors
Sliding and bi-fold door rollers, locks & handles • Retractable insect screens

Local family business servicing Coastal Taranaki

exceed®
we fix windows & doors

Call free anytime 0800 37 37 10
www.exceed.co.nz

iderm
INTEGRATIVE DERMATOLOGY

Did you know that most skin cancer is preventable?

Did you also know that winter is the best time to treat sun damage and pre cancerous skin lesions?

At iderm we offer unique medical treatments for all types of sun damage. Our internationally recognized skin care products protect you from developing sun damage and prevent skin cancer.

Expert Pediatric Care . Southern Cross Affiliated
TeleDermatology Available

P / 027 977 9119 . E / info@iderm.co.nz
A / 4 Butlers Lane, Oakura . W / www.iderm.co.nz

Dr. Lisa Connelly - Dermatologist

Lee Newton - Aesthetician



Volunteers at the Opunake Fire Station before going on the Foodbank Drive.

Foodbank aims for festive cheer

The annual Opunake Foodbank Christmas Food Drive was always going to go ahead rain or shine and so it did. The driving rain failed to

deter the volunteers turning up to the Opunake Fire Station on Monday evening before doing their rounds of the town's streets. "Thanks for turning up

in this lovely weather," Opunake Food Bank chair Linda Campbell greeted everyone. At 5.30pm the fire siren sounded, and two fire trucks

along with the fire police van, St John Ambulance, support vehicles from Sinclair Electrical and others toured the Opunake streets with volunteers collecting donations for the festive season.

These volunteers included cadets from the Opunake Surf Lifesaving Club. This year the St Pauls Church youth group had done a fund raiser with the church matching them dollar for dollar, the proceeds going towards a big shop for the Foodbank.

Other groups also provide support. A cheque from the Pihama WI was used to buy frozen chickens bought locally.

Linda says the schools have given them a list of families in need of help. This year it appeared the Foodbank would be making up about 30 Christmas parcels, which is

on par with the number they made up last year. Linda says anybody who missed out donating to the Foodbank Drive can still leave items at CoastalCare.

She said she wanted to thank the groups and individuals who had supported the Foodbank Drive, as well as the people who had donated to it.



ABOVE
Sorting through donated items the next morning.



ELTHAM
BUILDING SUPPLIES

LEFT: Sorting through
Cabinet Making, Glass Supplies & Custom Joinery Solutions

Donald & Ian Murray

☎ 06 764 8616 📞 027 242 8379
 📞 027 348 9445

136 High Street, Eltham
eltham.bs@gmail.com
www.elthambuildingsuppliers.co.nz



JSME
Jason Strachan Mechanical Engineering

For all your automotive and engineering requirements
Reliable professional service

Plus Water fittings • Hydraulic repairs • Trailer Hire
WOF • Batteries • Tyres

1759 South Road Tataraimaka
06 7524933

LAWYERS

OPUNAKE LAWYERS

Thomson O'Neil & Co.

Our Opunake Office is attended by:

Robert England on Wednesday & Fridays
for buying and selling houses, farms & businesses;
Trusts, Wills and Estates.

Mark Utting on Thursdays
for buying and selling houses, farms & businesses;
Trusts, Wills, Estates and refinancing matters.

FOR ALL YOUR LEGAL REQUIREMENTS

30 TASMAN ST, OPUNAKE

PH: 761 8823

Nursery Rhyme Ltd

Babywear and Gifts



Wishing our customers a Happy Christmas and a safe festive season

06 278 8035 | 158 High St, Hawera

Newton Gorge JOINERY
2016 LTD

ALL DOMESTIC & COMMERCIAL JOINERY



• Kitchens • Stairways • Vanities • Lounge Units • Bench Tops • And More

67 Breakwater Rd (up Norma's Way) • NEW PLYMOUTH • PHONE (06) 751 5065 • FAX (06) 751 5085 • WWW.NEWTONGORGE.CO.NZ

OPUNAKE COPS

Beware of scams



CONSTABLE KYLIE BROPHY

of technology and social networking applications to extend their reach to a wider audience and increase their likelihood of prospective victims. This can be achieved via the following delivery methods of unsolicited email, social networking profile or post, text message, advertised on a related web site, cold call, Instant Messaging (e.g. Facebook Messenger, Windows Live Messenger, Yahoo! Messenger, Skype, Google Talk, WhatsApp, WeChat).

Cyber safety is the safe and responsible use of Information and Communication Technologies (ICT). Here are some online safety suggestions.

- Don't give out any private information over the internet or through mobile phones about you, your family, friends or other people that you know
- Only accept friend requests from people you actually know
- Don't engage or respond to trolling or abuse; report it to the provider
- Don't believe everything you read – make sure you know it's coming from a reliable source
- Don't hide behind a computer screen. If you wouldn't say it to their face, don't say it at all
- If you are suspicious of

a website, carry out a web search to see if you can find out whether or not it is fraudulent

Further information about cyber safety can be found online at the [Netsafe website](#)

Rural property owners please be aware there has been some activity that is of concern to us. There have been a number of reported rural burglaries in our area over the recent weeks where ride-on mowers, quad and 2 wheeler farm bikes along with petrol and various small items have been stolen.

Rural New Zealand has a reputation for tightknit, supportive communities. You can help us by knowing your neighbours, exchanging contact phone numbers and keeping those numbers handy.

If you live rurally and need to leave the property to investigate something

untoward ensure someone knows where you are going, as much as possible about what you're checking and how long you expect to take.

We ask that you be vigilant and if you notice anything out of the ordinary note it down, suspicious people or vehicle.

In light of this recent activity we would like to offer some advice, Put yourself in a burglar's shoes. If you 'think like a thief' you will be able to identify signs of security weakness in your home. Lock your doors and windows when your home is unattended. Record the serial number of expensive electronic items and photograph these and other valuables. Keep valuables out of sight like jewellery, cameras and electronic games. Consider investing in an alarm or camera system and getting sensor lights

fitted. Keep garden sheds and garages locked when not in use. Keep hedges and plants around doors and windows well trimmed - don't give burglars a place to hide.

Other great prevention advice can be found on the NZ Police website www.police.govt.nz or www.snap.org.nz.

I would also stress to all road users, remember to drive to the conditions. We haven't had too many accidents on our roads of late and we would like to keep it that way.

We are still having the usual problems with idiotic drivers that enjoy ripping up the grass verges in town including those of private residences. We continue to have local wannabe racing drivers continue leaving their trade mark rubber deposits on our roads with notably the worst outside one of our local schools, while to some

this may be no more than an annoyance it is of real concern and only a matter of time until someone is badly hurt.

Remember to wear your seatbelt. Still a few of you out there throwing it on when you see us. No good I'm sorry. Put it on when you get in the car. If we see you reaching for it just because you see the Police car expect to get a ticket.

That's about it for now. Remember, if you have any info for us give us a call we are more than happy to help. Alternatively you can call Crimestoppers at 0800 555111 with all anonymous information. Beginning of festival season. People are starting to finish up for the year meaning increase of traffic. Be aware and stay safe.

First of all we would like to apologise for the lack of column in the recent issues of the Coastal News. For it is with your help that that enables us to keep our communities safe.

All information will be treated as confidential and no information is too small.

Online scamming also on the rise. Internet scams can affect anyone at any time so being aware of what to look for and knowing what to do is important to protect yourself and your family.

Common types of online scams include:-

- Romance scams
- Cold calling scams
- Business email compromise
- Employment or work-at-home scams
- Investment opportunity scams

These scams leverage the inexpensive and effective use

New safer speed limits

Waka Kotahi NZ Transport Agency has set new safe and appropriate permanent speed limits for State Highway 3 between Waitara and Bell Block in Taranaki, following public consultation late last year.

The new speed limits, which come into effect on 18 December 2020, will create a consistent 80km/h speed limit

along the route, improving safety on the highway ahead of the busy holiday period.

From Friday 18 December, the new permanent speed limits are 80km/h from 360m east of Mahoetahi Road to 400m west of Princess Street, and 80km/h from 430m east of Princess Street to 300m east of Bayly Street.

Director of Regional Relationships Emma Speight says SH3 between Waitara and Bell Block is one of the busiest roads in the region, providing access to key locations such as the New Plymouth Airport and Port Taranaki, and a high number of crashes occur on this stretch of road.

"There were 101 crashes on this route between 2009

and 2018. Seven people died and 14 people were seriously injured.

"Speed is a factor in every crash. Even when it isn't the cause, it can be the difference between someone walking away unharmed or being seriously injured or even killed. By making changes now, we can help prevent more crashes on this road and reduce the risk of a tragedy.

These permanent speed limit changes follow engagement with New Zealand Police and road user groups, as well as consultation with the public. In addition to safer speeds, Waka Kotahi is making the road safer with infrastructure improvements. Roundabouts are being designed for high-

risk intersections between Waitara and Bell Block along with other safety improvements such as rumble strips, wide centrelines and safety barriers.

Physical works will get underway this summer with the marking of wide centrelines and rumble strips and roundabout construction is scheduled to start at the end of 2021, subject to obtaining consents, land acquisition and full implementation funding.

"These improvements along with safer speed limits along the route will help prevent deaths and serious injuries on the highway and support current and future residential growth in Waitara," says Ms Speight.

No flooding problems this time



CFO CRAIG DINGLE

We were lucky with all that rain not to have any call outs

to flooding. Seems like all the work the council has done with diverting excess water before it reaches Opunake has worked. A big congratulations to David Clark and Steven Chisnell for passing their two day First Aid Course. These are essential skills to have as Fire Fighters.

We were privileged to have the Fire and Emergency Board members come to

Opunake Station for a visit while in Taranaki. It's good to see their commitment to the smaller stations.

A big thanks to everyone for your support with the food bank drive. Despite the rain and wind people were still out giving food.

What a great community.

Craig Dingle
CFO Opunake



For competitive pricing on all your rural cartage requirements - Give us a call today!

Taranaki wide

Phone 0800 707 404

CRAWFORD

AGRITECH Ltd

- TRACTOR & MACHINERY SERVICE & REPAIRS
- ON FARM SERVICING
- AIR CONDITIONING SERVICE, REPAIRS AND HOSE MAKING
- SPARE PARTS & FARM OILS
- IMPLEMENTS & ATTACHMENTS - SALES AND SERVICE
- FACTORY TRAINED TECHNICIAN
- TARANAKI & WANGANUI INDEPENDENT FERGIE TRACTOR SPECIALISTS

Ph 06 762 8023
Ian Crawford
Mob 0272 207 701

MASSEY FERGUSON | FORD | SAME | LANDINI | ISEKI | VALTRA | MATBRO
INTERNATIONAL | MERLO | DAVID BROWN | RENAULT | URSUS | JOHN DEERE

MORRIS
LUBRICANTS

the winning formula since 1869



One part of the concept design.

Council seeks feedback on proposed Manaia Combined Facility design

South Taranaki District Council (STDC) is seeking the community's views on concept plans it has had developed for a combined community facility at the Manaia Recreation Grounds.

STDC community development advisor, Masina Taulapapa, says the plans were developed after the Manaia War

Memorial Hall (the Hall) and Manaia Sports Complex (the Complex) had been closed because they were identified as earthquake-prone.

"Initially only the Hall was assessed as earthquake-prone and the Council committed up to \$1 million towards its rebuild. However, a Detailed Seismic Assessment on the

Manaia Sports Complex in 2018 also found it to be earthquake-prone and was closed," says Masina.

"After considerable community engagement, no clear direction was received on whether there should be one combined facility. However, with a small population and a significant financial contribution from the Council already committed for the replacement of the Hall and the current upgrade of the Manaia swimming pool (\$623,000), the Council felt the most prudent option was to design a combined community facility at the Manaia Recreation Grounds which could be presented for feedback," she says.

"We expect the plans to fit within or near to the \$1 million budget that has been set aside by the Council. But if the community want to see any additions, the Council would work with a community-led initiative to try and

secure extra funding," says Masina.

Feedback closes at 4:30 pm on Monday 21 December 21.

On this month in history

Peter Fraser dies

On December 12, 1950 Peter Fraser died, aged 66. The Scottish born parliamentarian took over when Labour prime minister Michael Joseph Savage died in 1940. He lost the 1949 election ending 14 years of rule by a Labour Government.

As a young man aged 26 in 1916, he was jailed for year for speaking out publicly against conscription. Yet when he became PM he introduced conscription during World War 11.

After the war ended he was a keen supporter of the United Nations.

WAREA STABLES
HORSE GRAZING FACILITIES

Warea Stables offer
grazing from basic grazing to full adjustment holiday grazing.

Horse treatment, kids lessons and arena hire.

For all pricing go to
www.wareastables.co.nz
or Phone: Lisa Deane 027 318 1253

POWERLINE FAULTS AND SERVICING

From a fuse or broken insulator replaced to a complete powerline rebuild
Call: **TOP OF THE LINE ELECTRICITY SERVICES**

Greg Lewis: 027 453 0326
Justin Robinson: 027 445 9162

Powerline Servicing Specialists
Free line inspections
Free advice | Free quotes

a simple cremation & burials

Simple but Significant
Helping Taranaki families with a range of simple, professional funeral services, with affordable caskets and urns

0800 236 236

233 Carrington Street, New Plymouth
www.asimplecremation.co.nz

INSURE TARANAKI

INSURANCE BROKERS

Expert, Tailored Insurance Solutions

INSURANCE ADVISERNET
Advice you can trust

34 Egmont Street, New Plymouth 4310
Ph (06) 759 4252 | Mob 0274 888 222
heydonyoung@insuretaranaki.co.nz | www.insuretaranaki.co.nz

HEADSTONES TARANAKI

Taranaki owned and operated

We create all types of new memorial work and restorations, including second inscriptions, repainting and cleaning existing memorials.

We also specialise in unique stone works for special projects.

TINY AUSTIN
021 663 199
tiny@headstonestaranaki.co.nz

The Christmas issue of Opunake & Coastal News is due out on the 17th of December. Deadlines for contributed content is the 9th of December.

White Island deaths led to charges



White Island, where so many people lost their lives.

GNS Science is facing charges following the 2019 Whakaari/ White Island eruption that claimed 22 lives.

The Crown Research Institute is one of thirteen parties that have been charged by WorkSafe. GNS says it stands by its people and its science. The court date is set for Tuesday, 15 December 15.

Professor Shane Cronin, Professor of Volcanology, University of Auckland, comments:

"I think it is good that questions are asked, so that those affected by the tragedy are able to gain some sense of solace and satisfaction that we will learn from it. I hope that there will be recommendations for improved practice around volcanic hazard management and safety in the future. I have no knowledge of any of the details of the charges or the points of law they concern. I do hope, however, that the inquiries keep the following things in mind with respect to providing science advice: "Volcanoes are dangerous

and unpredictable phenomena. Even with all the knowledge in the world, we as scientists will never truly be able to recognise every sign of impending eruption, nor forecast every event.

"New Zealand volcano agencies, especially GNS Science and GEONET have always strived to provide as much information as they can, as quickly as they can,

and as simply as they can to the public. Looking back, there are questions as to whether the generic Volcanic Alert Level System was appropriate for a volcano such as Whakaari, which has much more rapid changes in eruption state than most of our other volcanoes and produces explosions with very little warning.

"I hope that whatever comes of these charges, that we

have a stronger and more open science communication framework for volcanoes and their hazards. The worst possible outcome would be if volcano science agencies such as GNS Science, or individual volcano scientists become too timid to make public statements on volcanic activity for fear of being wrong, or of being prosecuted."

Consumer NZ lodges complaint against airbnb and Bachcare

Consumer NZ has lodged a complaint with the Commerce Commission, requesting it take court action against accommodation booking sites Airbnb and Bachcare for their use of unfair cancellation terms. Consumer NZ chief executive Jon Duffy said the booking sites' heavy-handed policies had resulted in some customers being hundreds of dollars out of pocket.

Complaints to Consumer NZ about the sites had risen since the last Covid-19 lockdown in August. "Consumers who had booked accommodation but

couldn't travel because of the lockdown told us they'd been denied a full refund. Even though they couldn't use the accommodation, through no fault of their own, they were informed they wouldn't get their money back. That's plainly unfair," Duffy said.

Consumer NZ reviewed the booking sites' cancellation policies and believed they risk breaching the Fair Trading Act, which bans unfair terms in consumer contracts.

The sites' customers can face steep fees if they need to cancel, in some cases forfeiting the entire amount they've paid.

Duffy said Airbnb allows hosts listing on its site to use cancellation policies that can result in customers losing 50 to 100 percent of the

accommodation fee, despite giving reasonable notice they need to cancel.

In contrast, if an Airbnb host wanted to cancel a booking, the most they could be charged by Airbnb was \$145.

Bachcare's standard terms were even harsher, he said. Its cancellation policy states the customer will lose all accommodation fees and the service fee, even if they cancel 60 days before the start of their stay.

"In our view, these charges are excessive. If an accommodation provider imposes a cancellation fee, it can't just charge whatever it wants. Companies must have a legitimate basis for their fees and take into account the fact the property could be relet to another customer. It's hard to argue

the fees being charged to Airbnb and Bachcare customers are in any way justified."

Consumer NZ asked Airbnb and Bachcare whether they'd reviewed their terms for compliance with the Fair Trading Act but didn't get satisfactory answers, Duffy said.

In its complaint, Consumer NZ has asked the Commerce Commission to seek a court declaration that the cancellation terms are unfair. Any term the court deems unfair can't be enforced by the trader.

Duffy advises consumers who believe they've been charged an unfair cancellation fee to make a complaint to the Commerce Commission.

TENDER CLOSES 4PM NEXT THURSDAY



BAYLY ROAD WITH SCALE

139 Bayly Road, Pungarehu

eiio.co.nz #OPR00881

Tender Closes
4pm, Thursday 10 December 2020
at McDonald Real Estate Ltd
1128 South Road, Oakura

Viewing
By Appointment Only

This top quality, 174.38 Ha (430.89 acre) dairy farm, currently milking approx. 450 cows through a tidy, fully automated 44 bail rotary cowshed. Currently in 3 titles with 3 homes; the main home being a brick 4-bedroom family home set in magnificent gardens. This farm is well subdivided, has good race systems, fencing and water reticulation. The land is flat to easy in contour and has a mix of strategically planted live hedging and shelter belts. Currently operating as a level 1-2 system, this farm is growing about 20Ha of crops, comprising of 15Ha of Chicory and 5Ha of Maize. With an engineered effluent storage system installed in 2019, numerous farm buildings for hay, storage, implements and calf rearing purposes, everything is in place to carry on as the vendors have done for many years. An adjacent 26.7Ha lease block is possibly available. Options include a Going Concern.

Blair Burnett
M 021 190 7728



OPTIONS HERE ON STENT ROAD

247 Stent Road, Warea

eiio.co.nz #OAR00273

For Sale
Buyer Enquiry Over \$3,500,000
Plus GST (If Any)

Viewing
By Appointment Only

Located on Stent Road is this lovely 76.33 Ha (188.62 acre) dairy farm currently milking approx. 200 cows through a tidy 30 ASHB cowshed. This property is flat, well raced, fenced and it has a reliable water supply. With a modern effluent system in place and more than enough shed space for all your storage requirements, this farm is well set up and ready to go. Being well located, this would also make a top runoff and/or cropping and/or grazing block. The bonus of the Warea River on one boundary and the Tasman Sea on another gives the opportunity to enjoy sporting and recreational activities such as swimming, surfing, fishing and white baiting to name a few. The vendors have reduced the asking price and are motivated to meet the market. Phone today for more details.

Blair Burnett
M 021 190 7728



Houghton's Plumbing, Heating & Gas Ltd

We wish our clients and their families the very best Christmas season and a happy and prosperous New Year. Thank you for your support and we look forward to offering you continued service in the New Year.

Office and Showroom -
Closed 4pm Tuesday 22nd December 2020
Open 8am Tuesday 12th January 2021

Houghton's Plumbing, Heating & Gas Ltd
164 PRINCES STREET, HAWERA 06 278 8883 • www.houghtonplumbing.co.nz
✓ Plumbing ✓ Gasfitting ✓ Drainlaying ✓ Bathrooms ✓ Heating ✓ Parts & Service

Master Plumbers

Woodward's FIREWOOD

Animal Bedding For Stand Off Pads Calf and Goat Sheds Wintering Barns

- Untreated ground up waste wood —
- Raw material stockpiled then ground to order —
- Pick up or delivered to your farm —
- 9m³ truck loads —
- 65m³ truck loads —

06 755 2047

124 De Havilland Drive, Bell Block • office@woodwardsfirewood.co.nz
www.woodwardsfirewood.co.nz

Taranaki young elected members meet Dr Bloomfield

Taranaki Young Elected Members (YEMs) met up with 54 other young councillors and community board members from around Aotearoa New Zealand in Wellington. NPDC councillors Anneka Carlson and Amanda Clinton-Gohdes, and Taranaki Regional Councillor Elvise Van Der Leden attended the YEM Hui for 2020 where they were able to network and share their experiences as young representatives elected to local government in their rohe. The 2018 YEM hui was held in New Plymouth, hosted by Councillors Stacey Hitchcock and Charlotte Littlewood who were the only under 40 year old elected members in Taranaki at the time. The 2019 local elections saw a rise from 7% to 13.9% in Young Elected Members to local government across Aotearoa New Zealand.



Elvise Van Der Leden, Anneka Carlson and Amanda Clinton-Gohdes.

As first term councillors, all three Taranaki representatives were

excited to hear about what was going on in other regions and strengthen their understandings about current challenges that local government is currently facing. A highlight of the

event was the keynote speaker, Dr. Ashley Bloomfield. The Ministry of Health Chief Executive shared his experiences in his role responding to the COVID 19 pandemic, tying

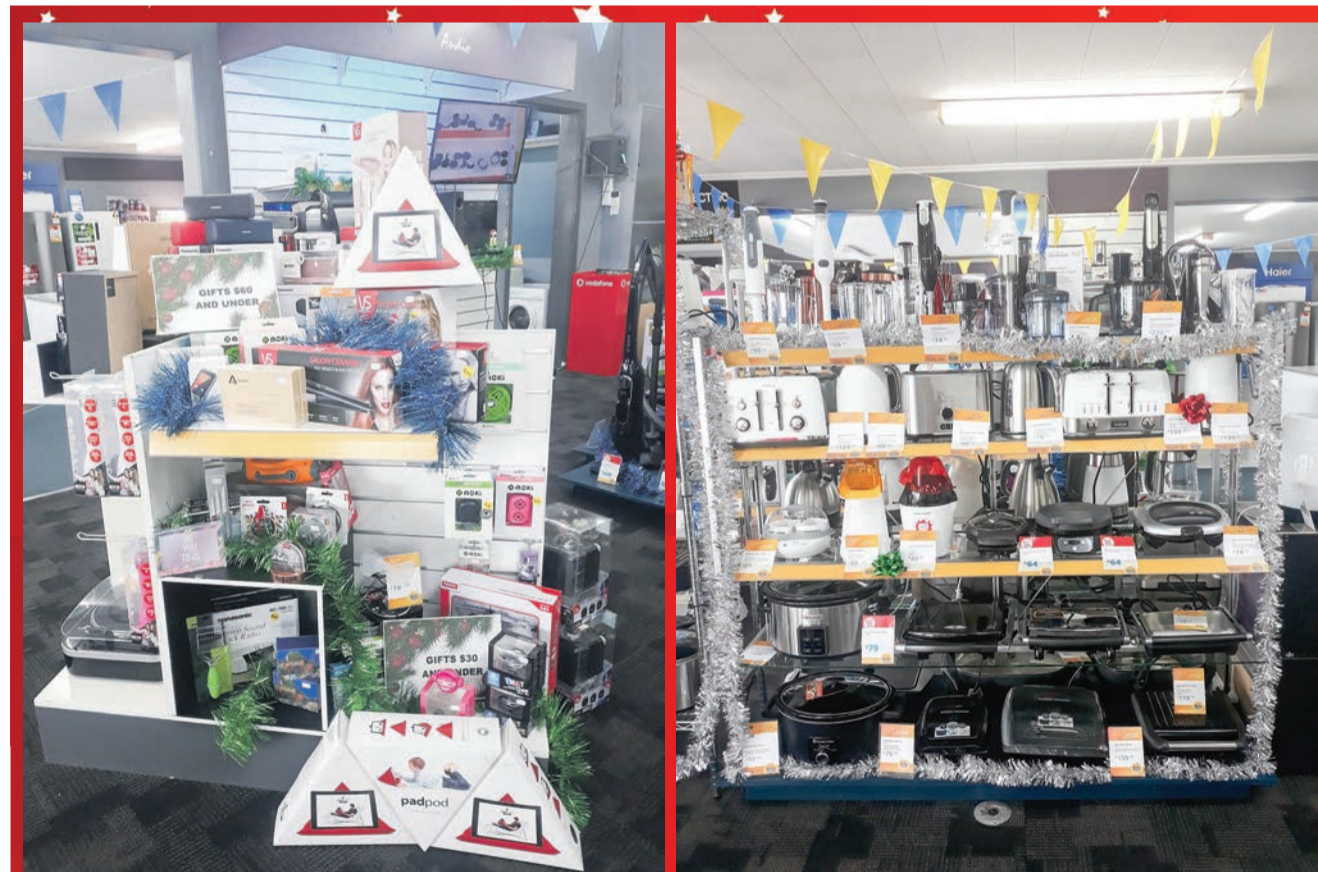
his speech up with a quote, "The only appropriate use of power is to em-power others". Other key individuals who shared their experiences and inspired Councillors Carlson,

Clinton-Gohdes and Van Der Leden included Wellington City Councillor Tamatha Paul, who attended the same decile one Tokoroa High School as Van Der Leden and was the first Māori female to become president of the Victoria University of Wellington Student Union. YEMs were also given a tour around Lower Hutt City Council buildings and the Naenae area by the youngest mayor in Aotearoa at 28 years old, Campbell Barry of Lower Hutt. Van Der Leden reports, "One of the key things we collectively agreed on as a Young Elected Members network is that we are not 'the future'. We are the now. Today's tamariki and their mokopuna are the future. We are here to ensure that their future is protected and set up for them to thrive, not simply survive."

Van Der Leden is the youngest TRC councillor at 29 years old, Carlson the youngest NPDC councillor at 31 years old and Clinton-Gohdes is the second youngest at 34 year old.



Dr Bloomfield and Anneka Carlson.



McDonald REAL ESTATE
MIRENZ LICENSED REEA 008 LIMITED

REAL VALUE FARM ON PUNIHO RD

341 Puniho Road, Newall

Located on the upper Puniho Road is this 130 Ha approx. (85 Ha effective) dairy farm which is currently milking 190 cows through an excellent 9-year-old 36-bail rotary cowshed. With two large 3-bay sheds and an old woolshed there is plenty of room for your hay, storage and calf rearing facilities. Supplying Open Country, production has been consistent averaging a little over 67,000 kgMS over the past 5 years. This farm is also well subdivided, has good race systems and a reliable water supply. There is a very tidy 3-bedroom family home with attached double garaging plus the bonus of 1-bedroom self-contained cottage. This property has plenty of potential to lift production and for a first farm you will be hard pressed to find better value for money. Genuine and motivated vendors.

eleio.co.nz #OAR00281

For Sale
Offers Over \$2,495,000
Plus GST (If Any)

Viewing
By Appointment Only

Blair Burnett
M 021 190 7728



GREAT IDEAS FOR CHRISTMAS GIFTS AT SINCLAIR ELECTRICAL



Instore now

SINCLAIR ELECTRICAL & REFRIGERATION
31 Tasman Street, Opunake
Phone: 06 761 8084

Electrolux Panasonic dyson PARMCO Haier MITSUBISHI ELECTRIC Fisher & Paykel BOSCH LG

Everybody's Theatre AGM

At the end of September 2020 Everybody's Theatre Trust had their AGM – many thanks to all those who attended and a special

thanks to all those who took on the Trustees roles: Your dedicated team of Volunteers this year to keep this special place open are: Kim Gatenby – Chairperson, Jane Forkert – Vice Chairperson and Newsletter Co-Ordinator, Maree Drought – Treasurer, Jenny Bennett - Projection Room Co-Ordinator (shop), Steven Muller - Website and Event Pronto Co-Ordinator, Rachael Hughson-How – Poster and Flyer Co-Ordinator, Katrina Smith – Trustee, Mary Young – Trustee, Vicky Muller – Trustee, Arnold Hickey - Trustee
Graeme Dodd – Trustee.
The chairperson thanked all trustees and volunteers for their support over the year and said; "This last year has been interesting to say the least – we started

off ahead of the prior year, and a full schedule of events and activities for the community, and then Covid hit. This closed the Theatre down overnight. During the shutdown we worked hard on plans and processes on what it might be like when we could reopen, and this

included closing our kitchen for a further two months and cancelling all further events for the year. Attendance has been slow since we reopened, but it's also our downtime of the year – it will be interesting to see how things go and we are fortunate to have community

and funder support. " We have also been busy with a dedicated committee planning and preparing for our 100-year celebrations next year – this is shaping up to be an awesome event with something for everyone and tickets are on sale now on the website or call Aretha

on 027 383 7926. It was also acknowledged the organisations who have contributed to our funding which has also kept us going; Pub Charity, TSB Community Trust, STDC and COGs.

Aretha Lemon.

ALUMINIUM JOINERY

Rylock

- Windows
- Bi-Folds
- Sliding Doors
- Entrance Doors
- Conservatories
- Garage Doors
- Inserts/Retro Fitting

Call today for a free measure and quote

IN YOUR AREA EVERY WEEK.

Ph: (06) 758 8073
Fax (06) 758 4157
Email: sales@rylocknp.co.nz
Web: www.rylock.co.nz

Water network upgrades seen as top priority

More than 9,400 people had their say on what NPDC's priority work programmes should be over the next decade and how more than \$2 billion of public funds should be invested.

Called the Top 10 Kōrero which took place over 11 weeks, the public were asked to give feedback on proposed work programmes from water to zero waste, to tracks and trails, to the climate response to a Marina, to what role NPDC should play in any future Multi-sport hub at the Racecourse.

Now the Mayor and Councillors have the job of deciding what's in and what's out of the draft 10-year plan for further public feedback later this summer, followed by final approval of the plan by the end of June 2021.

"Thanks to everyone who contributed to the more than 9000 responses received on options to help shape our community over the next decade. Just like your kids' Christmas present list for Santa, we can't do it all and have to balance needs and wants with our collective ability to fund the future through rates. We're looking to reduce our overheads where possible, pitching projects to Central



Upgrading the district's water network has been ranked as the top investment priority by the public in NPDC's Top 10 kōrero.

Government for funding while at the same time realising there has been years of underinvestment in core services like our water and wastewater networks," says New Plymouth District Mayor Neil Holdom.

"We've got some big decisions to make in producing a draft 10-year budget over the next two months and then we'll run a formal consultation programme to again seek everyone's views on where we are going as a community before developing the final plan in June 2021."

The public surveys in the Top 10 Kōrero were targeted at two distinct groups and were designed with independent data

experts to ensure they were scientifically robust. One group was to the general public and a second representative group was formed to make sure views reflected the demographic make up of the district.

People were asked to rank their investment priorities and fixing the ageing water network came out top in both groups:

The representative group was more likely to pay a small rates increase (or less likely to oppose a rates increase) for zero waste, tracks and trails, a multi-sport hub, thriving towns and cities, Covid response and water upgrades.

The general public was more likely to pay a small

rates increase (or less likely to oppose a rates increase) for a multi-sports hub, extending tracks and trails, thriving towns and cities, water upgrades, zero waste and a marina.

Tracks and trails was the service with the highest overall level of satisfaction.

The most feedback on any single issue was on a potential multi-sport hub with around 1,500 responses.

There was an unwillingness to pay a medium or large rates increase.

Water meters and more public conversations were the least favoured options.

OUR PEOPLE MAKE THE DIFFERENCE

Proud to support Coastal families

vospers funeral services
06 759 0912
257 Devon St East, NP
vospers.co.nz

LOOKING FOR A REAL ESTATE PROFESSIONAL YOU CAN TRUST?

Call **Viv Scott** today for help with buying, selling - or for a friendly, confidential chat to discuss your options.

Viv Scott
M 027 441 4596
E viv.scott@eieio.co.nz

McDonald REAL ESTATE
LIMITED

Value Farm Sheds

Value Building Supplies farm buildings are constructed from quality materials that last, at prices you can afford. Visit our website for full specifications: www.valuebuilding.co.nz

VALUE Building Supplies
BuildLink Buy Better Build Better

1 KATERE RD, NEW PLYMOUTH PHONE: 06 759 7435
JAMES ST, INGLEWOOD PHONE: 0800 245 535

POWERWORX

Power Supply Rural & Residential

Design, upgrade and repair overhead and underground power supplies

- Powerco Approved
- Underbores - wires and pipes
- Powerline maintenance
- Fault repair
- Subdivision power installation
- Vegetation control around powerlines
- Network connections
- Transformer & line upgrades
- Specialists in rural power servicing and installation

0800 877 746

Taranaki Region
Contact Bruce Wilson Manager
58 Glover Road, Hawera Ph: 06 278 4514
Email: powerworx@obertech.co.nz

Opunake Banking Hub set to go



From Monday there will be an extra plus to Opunake Library Plus. As well as withdrawing books and all the other services they provide, it will be possible to withdraw and deposit money here as well.

Last year Opunake was selected as one of four sites around the country to pilot a regional banking hub, along with Stoke, Twizel and Martinborough. The year-long trial brings together six banks, ANZ, ASB, BNZ, Kiwibank, TSB and Westpac to help their customers in smaller country centres

access financial services.

The TSB, who operate the town's only bank had suggested Opunake as one of the centres to host the year-long trial. Two of the four centres are in the South Island and two are in the North Island. Stoke and Martinborough no longer have banks in them, while Opunake and Twizel do. The existing ATMs in Opunake will continue to be used.

The Opunake Banking Hub will be hosted in the Opunake Library Plus in partnership with the South Taranaki District Council.

On Monday the hub will be launched with speeches from the banks and local representatives. It will be the last of the four regional hubs to be launched.

The trial had been due to start in May, but had been delayed because of lockdown. Plans for the hubs will however remain the same.

"During the Covid-19 lockdowns, banks helped thousands of New Zealanders get better at using online and mobile banking," says New Zealand Bankers' Association chief executive

Roger Beaumont. "Those customers aren't looking back. However, we know that some customers still prefer face-to-face banking and that's what this Banking Hub trial is designed to test.

"I am delighted to see that this unique partnership of six banks looking at innovative ways to support smaller communities like Opunake is ready to go. We would like to thank the South Taranaki District Council for partnering with this initiative."

All four hubs feature the same technology of the new deposit-taking Smart ATM and phones and tablets. These can manage nearly all banking transactions either online or over the phone. The phone and tablets allow customers to talk directly to their bank and make transactions and financial decisions quickly.

A New Zealand Bankers' Association spokesperson said a concierge to assist customers will be hired directly for the role by the Library and will assist with library work when needed. There may be short periods during the day when a concierge won't be unavailable, but TSB will support if needed.

On this month in history Arthur Lydiard dies

On December 11, 2004 famous athletics coach Arthur Lydiard died while on a lecture tour of the United States. He was 87 when he died in Houston.

He had his greatest moment as a coach of New Zealand athletes when Peter Snell and Murray Halberg both won gold medals at the 1960 Rome Olympics on the same afternoon, within an hour of each other.

Specifically, Murray Halberg won the 5,000 metres gold medal and Peter Snell won the 800 metres

gold.

New Zealand athletic heads missed their chance so Lydiard headed overseas to Finland, Denmark, Venezuela and Mexico. Olympic golds were the result, notably in Finland.

American magazine Runners World named him as the greatest running coach of all time.

Lydiard was himself a very good runner. For example, he came second in the New Zealand marathon event.

*HEADSTONES * GRANITE PLAQUES
*CERAMIC PHOTOS & PLAQUES

0508 763 84 37

STONE CREATIONS NZ

www.stonecreations.kiwi.nz
stonecreationsnz@gmail.com

Creative Centre & Showroom
310 Dover Rd
off Surf Hi way 45- New Plymouth

Forever Memories Your Way

Merry Christmas from West Coast Monumental

Introducing your local Banking Hub.

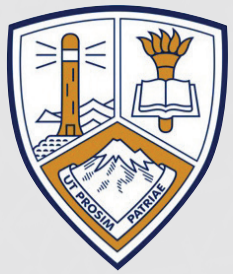
A shared centre for your basic banking needs. Open 7 December 2020.

Six of New Zealand's largest banks have come together under one roof, to make sure your community has easy access to basic banking services.

If you're a customer of ANZ, ASB, BNZ, Kiwibank, TSB or Westpac, you can use our Smart ATM for your cash transactions. For anything else, please use one of our internet banking and phone booths to connect directly to your bank.

We look forward to welcoming you to Opunake Banking Hub.

Opunake Banking Hub, 45 Tasman Street, Opunake



OPUNAKE HIGH SCHOOL

Te kura tuarua o Opunake

GROWING GOOD PEOPLE FOR A RAPIDLY CHANGING WORLD

OPUNAKE HIGH SCHOOL
CONTACT DETAILS

P: 06 761 8723
Attendance: 0800 288 363
Tasman Street, Opunake 4616
PO Box 4, Opunake 4645
www.opunake.school.nz
admin@opunake.school.nz

STUDENT SUCCESS

The 2020 Senior Prizegiving was a massively successful afternoon, thank you everyone who was able to attend, and congratulations to all our award winners. Below are some of the major prize winners in 2020.



Nicholas Cup
Sportswoman of the Year
Hayley Quinnell

Woolford Cup
Sportsman of the Year
Cameron Quinnell



Talia Maree Patene Memorial Trophy
Female Leadership
Waimirirangi Thomas Wikaira

Te Whiwhia Trophy
Manu Kōrero Speech Competition
Thomas Tito-Green

Kui Pikitia Tito Trophy
Manu Kōrero Intermediate Maori Speech
Aaliyah Thomas Wikaira



Pam Morris Cup & Medal
for Excellence in Year 11 Subjects
Lorin Symons

Lena Sharrock Award
for Runner-Up in Year 11 Subjects
Lexi McQuaig



Sue Spindler Cup & Award
Excellence in Year 12 Subjects
Madeline Symes

Sue Spindler Award
Runner-Up in Year 12 Subjects
Dinah Symons



McNeil Adams Cup, OHS Medal and Ikaroa Lodge Award for Dux of the School
Blake Harkness, with his parents.



Graham Sulzberger Memorial Cup
For Best All Round Boy
Blake Harkness

Griffith Merit Cup
For Best All Round Girl
Meg Gibson

SUCCESS AFTER HIGH SCHOOL

We recently had three past students just happen to wander by our kura while taking a break from their tertiary studies and post-high school careers.

Sarah Haden, Katie Sinclair and Janis Baker are among the many past-students who have transitioned into life after Opunake High School. Sarah is currently studying at University of Otago, Katie studying to be qualified as a Logistics Specialist in the Air Force, while Janis is completing a mechanical apprenticeship with Trustpower.

When we asked the girls about their top tips for our students they had this to say:

- "Keep working to achieve what you want - say yes!"
- "Go and experience what the rest of Aotearoa has to offer"
- "Take any opportunity given to you and make the most of it"

We are hoping to have these three girls back in the new year to share with our 2021 Year 13's.



Principals Address



Nga mihi o te wa ki a koe me to whanau
Greetings to you and your family

As we near the end of the academic year and as I take the time to reflect on the challenges of 2020, I have am filled with two resounding emotions.

The first of these is pride. Proud to be the Principal of Opunake High School. Proud that we are able to offer our students so many opportunities at Opunake High School. Proud of the many fantastic achievements and the resilience everyone has shown with Covid. Proud of the staff at Opunake High School as we have worked through these challenges. Proud of the work our Board and Home & School do behind the scenes to keep providing the many resources they do.

I am proud that Opunake High School will continue on it's journey of growing good people for a rapidly changing world thanks to the hard mahi of so many caring and passionate people, people of all ages and backgrounds strong in their cultural identity, people who live our dream values of Diligence, Respect, Exceeding Expectations, Aroha and Mana everyday.

The second emotion I am feeling at this point of time is sadness. This sadness is because this week I presented my resignation to the Board of Trustees, and from 2021, will be taking up a position at Melville High School. Opunake High School is a tremendous school. There will be challenges ahead, the least of which is what lies ahead for the Board as they work to find a replacement, and that staff and students will continue to thrive in these times of COVID, which is fast becoming the new normal!

The whakatauki "E kore te tangata e pakari i runga i te wai marino" - A person who remains in calm waters will never get strong. Students of Opunake High School, it is your responsibility is to build a strong waka grafted from the hard work and talent of dedicated staff, so that you are able to navigate in calm waters and when the white water swirls you are able to skillfully navigate away from obstructions to keep to the course of your personal journey. These experiences will help shape a better future and grow good people for a rapidly changing world. With our outstanding students, we know the world is yours.

No matter who you are or how long you have been here at Opunake High School, you all contribute, because without even the smallest contribution we could not achieve the fantastic results we achieve each and every day.

Noho ora mai ano
Peter O'Leary - Principal



Opunake High School
Te Kura Tuarua o Opunake

Junior Prizegiving 2020

Friday 4th December



Commences: 11am
Parents and Caregivers are invited
to celebrate the successes of our
Year 9 & 10 students at our
Junior Prizegiving

Healthcare careers expos a hit with Taranaki students

In light of the cancellation of the Taranaki Careers Expo 2020, the recruitment team at Taranaki District Health Board (DHB) took matters into their own hands and held healthcare careers expo at both Taranaki Base and Hāwera hospitals recently.

Students from high schools throughout Taranaki were invited to attend the expos, giving them the opportunity to have a

look around the hospitals and talk face-to-face with staff from throughout the various clinical and non-clinical teams about their roles. Feedback from the schools that attended was overwhelmingly positive.

Brett Zimmerman, New Plymouth Girls' High School head of department - Careers said, "Our students got immense value from this expo. It certainly opens up

their perspective on all the different pathways in the health profession."

Chantal Brophy, Ōpunakē High School careers administrator said, "I took eight year 11 and 12 students who were interested in the health sector as a possible career pathway. The sessions were interesting and informative. Dr Hannah Lawn (Rural Hospital Medicine consultant) was

a star, sharing her story/pathway with passion and enthusiasm. She was very relatable having grown up in a rural area, which made it seem very do-able for our students."

Jenna Kensington, Taranaki DHB recruitment coordinator said, "Given the great feedback we've received from the schools we hope to make the expo an annual event. We encourage

Taranaki high schools to contact us if they would like to attend in future, or if there are any other ways in which

we can support their students into healthcare training and roles."

Taranaki DHB calls for urgent equipment return

If there's hospital equipment at home you no longer need, now's the time to take it back. The Taranaki District Health Board (TDHB) is urgently recalling the equipment from former patients as stocks available are running significantly low for new patients.

Each month TDHB issues an average of 600-650 physio and occupational therapy aids for short-term use.

Jacqui Herrett, TDHB Allied Health associate director, says it's a big job following up around 7500 pieces of equipment a year.

"We have so much out there and it would be great to get it back before Christmas," she says.

There's a massive range issued for independence but most lacking are crutches, frames, walkers, shower stools, toilet frames and raised toilet seats, Jacqui says. TDHB purchases 800 sets of crutches a year and there are less than 100 currently available for patients.

"The return of equipment is often a bit slow but we normally get enough back to keep the supply chain going. But recently the balance

has really tipped." If people are concerned they are still using their equipment and have had it for more than six months then we can arrange long term loan equipment, she says.

The problem has been compounded by the supply chain being affected by COVID-19, as there isn't the same volume of new equipment available. TDHB is also doing more surgery to catch up after COVID-19 lockdown so there's more equipment being issued.

At the time of issuing, equipment forms with a map are given to patients asking

them to return the equipment within weeks or months to the 'stores' area at the rear of Base Hospital or Hāwera.

At New Plymouth people can take their equipment to the Stores area at the rear of Base Hospital where it's easy to drive up and drop off without needing to park. Or they can take it to the main entrance reception.

In South and Central Taranaki equipment can be returned to the main entrance of Hāwera Hospital and the Stratford Health Centre.

If someone is really struggling to return equipment to the hospital, a home pick-up can be arranged



Awww. Getting Acquainted, Stoney Oakes Wildlife Park, Inglewood.



SCHURR IRELAND
CHARTERED ACCOUNTANTS

NEW PLYMOUTH **ELTHAM**
p. 06 759 0105 p. 06 764 8305

www.schurrireland.co.nz



CERTIFIED

**Plumbing, Gasfitting and
Drain Laying**

**Plus! Roofing, Wood Fires and
other Heating Solutions**

06 761 8757
027 445 7164

gibson.plumbing@xtra.co.nz

OKATO POOL LEARN TO SWIM



JANUARY SUMMER HOLIDAY SWIM LESSONS

Lessons held 11th Jan - 22nd Jan 2021 10am - 12pm

Registration Day
Wednesday 9th December 2020 3.30pm - 5pm
BYO TOGS!

\$85 for 10 lessons over two weeks
\$80 Early Bird price (if paid by 10th January 2021)

Okato Pool 06 7524825 | Fiona Lacey 027 4270593 | TEAC 06 7596060

Peter Kuriger Engineering & Concrete

We Repair Farm and Contracting Machinery - Hydraulic Rams Diggers and all Buckets - Tip Trailers - Quarry Equipment and undertake General Maintenance - plus Stainless Welding

Need Concrete? troughs, culvert pipes and lids, bridge decks, box culverts and bases, inspection pipes and much more....call us.

889 Upper Kaweora Road - Opunake 0274 526 718 - 06 761 8122



Bach accommodation will support young boxers

It's Friday evening at Barbwire Boxing in Opunake and James(Batman)Langton is taking his young boxers through their paces.

"I'm telling you guys we're going to be the best boxing club in New Zealand," he tells them. The passion is clearly evident in his voice and in his eyes.

The Opunake dairy farmer had taken up boxing when his rugby playing days were finished. Since then he has won and lost the New Zealand National Boxing Federation Cruiserweight title and then shifted gear to pick up the New Zealand Pro Boxing heavyweight title. Now he is the owner of the Barbwire Boxing Gym..

"I firmly believe we'll get a world champion out of this gym in the next 12 years," he says. "I believe with the group we've got that's achievable, but that comes with a cost."

That cost includes raising money for equipment and to send his boxers away to boxing tournaments around the country. To this end he has added Barbwire Bach to his repertoire. For the last 12 months he has been working on doing up living accommodation that can accommodate 5-6 people next to his gym.

The bach comes with bedrooms, kitchen, bathroom facilities, lounge and living area, and TV.

With the days getting longer, there is a deck with a panoramic view of the Opunake Lake. For those



James(Batman) Langton and Dr Matt Verleije with young boxers on the deck at Barbwire Bach overlooking the Opunake Lake.

interested in venturing out on the water there are a couple of kayaks available, as well as barbecues.

Interest in the bach has already been brisk.

"I have set this up as a Barbwire Boxing fitness resort," says James. "I've had a couple of professional boxers come here and train under me." He would also welcome any basketball team or rugby players wanting to come and do fitness training. "If people want to hire it out for a day they are more than welcome."

He says anybody interested in booking the bach can

get hold of him through Barbwire Boxing.

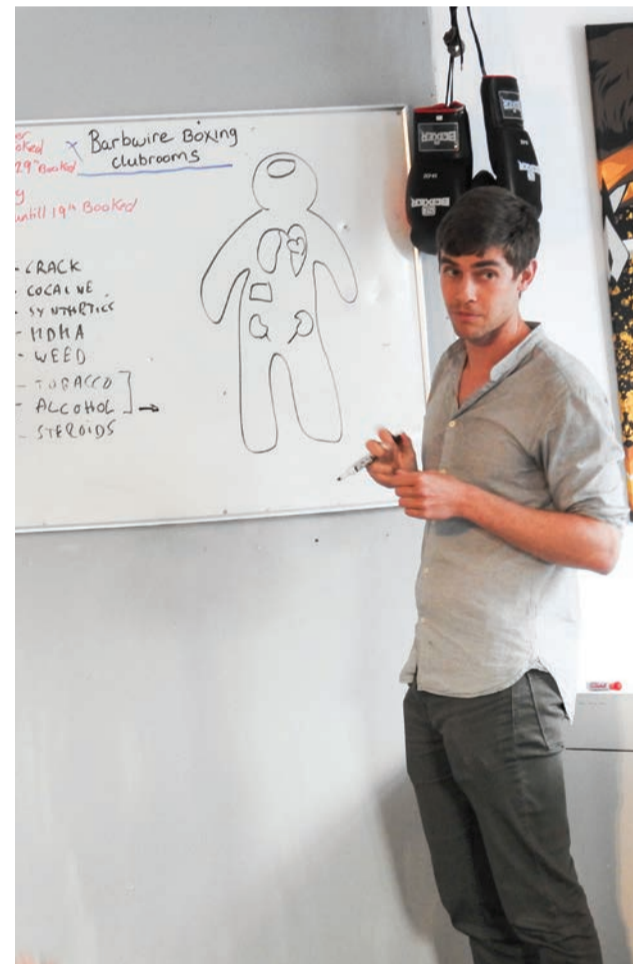
"I'm trying to get the place up for the community, for kids wanting to better themselves. Most of the money goes straight back into the club, to get the boys to tournaments, buy gear and improve facilities."

Their training nights are Mondays, Wednesdays and Fridays. After training is finished there's a barbecue dinner and sometimes there is a guest speaker. Tonight it's Dr Matt Verleije. Originally from Belgium he has been practicing at CoastalCare in Opunake since February, and his message was a threefold one, on knockouts, diet and drugs and alcohol.

James said he was particularly keen to have Matt come and speak to them as he had concerns about the dietary habits of his young boxers. As it was, Matt had his audience eating



Opunake Lake as seen from Barbwire Bach.



Dr Matt Verleije talking about drugs and their effects on the human body.

BARBWIRE BOXING & FITNESS
Accommodation at the Barbwire Bach now available



Barbwire Cross fit training.
Mon, Wed, Fri 10am
Barbwire Boxing & Training
Mon, Wed, Fri 6pm

Training will be conducted by Heavyweight Champion of New Zealand James Batman Langton



Contact:
027 469 2912

Wishing James all the best from Mike & Julie and the team at Walsh Agrimec



Phone 06 761 8999—027 256 8083
Opunake's Biggest Range of Tyres



Come in and see us for a quote. We also stock a big range of batteries & automotive accessories.

38 Ihaia Road, Opunake
Email: accounts@agrimec.co.nz

Proud to support James and the Barbwire Boxing Gym and Bach



Contact Phill - 027 236 7129

Bach accommodation will support young boxers

out of his hand, with his talk frequently peppered by questions.

Matt spoke about the difference between the slow sugars found in fruit and the less useful fast sugars found in junk food.

“Slow sugars are really useful as they are the fuel of your muscles, particularly if you are a boxer. If you have too many fast sugars it turns to fat.”

Protein is also important. “If slow sugars are the fuel of your muscles, protein makes up the muscle.”

Matt defined drugs as “any kind of substance you ingest to change your body physically.” In a sporting context he said there are penalties including financial ones as well as bans on taking part for those checked and found to be taking them.

He spoke about the effects



Batman takes everyone through their paces.

the best for the future.” crossfit training sessions
As well as the boxing at 10am on Mondays, sessions, James also runs Wednesdays and Fridays.

Our next issue is due out
DECEMBER 17
Phone us today to advertise on 761 7016

Proud to support James and the Barbwire Boxing Gym and Bach

Craig Corrigan ELECTRICAL OPUNAKE

- All Cowshed Wiring
- Farm Control Systems
- Domestic Wiring
- Electrical Inspections

No job too big or too small
Wiring the Coast - 20 years experience
Ph: Craig on 027 207 7775



The Barbwire Bach living room.

He likened the effects of methamphetamine to going to a fish and chip shop, taking the brain out and putting it in the fryer.

“It’s extremely extremely dangerous and very damaging.”

He said even coming from a part of the world popularly known for its place in the drug culture he had not really known of it until he came to New Zealand.

“It really is one of the nastiest drugs. Try to avoid it at all costs.”

Matt is set to leave these shores as he and his wife plan to return to Belgium.

James says he was pleased to see three or four others who aren’t part of the usual group come along for the talk.

“I’ve got to take my hat off to Matt. He’s done his research and went out of his way to give this presentation. I’d like to make a special thanks for his year’s commitment to Opunake and wish him all

different types of drugs had on the individual. The purpose of steroids is growth, so were there to be a single bad cell in the body this could lead to a heightened risk of cancer.



...and kitchen.

UNKA'S JEWELLERS, WATCHMAKERS AND ENGRAVERS
189 High Street, Hawera Ph 06 278 4258

Come and see our Christmas specials -
Rings, bracelets, necklaces, earrings and watches

FLOWLINE plumbing + gas
Taranaki Ltd

Proud to support James and Barbwire Boxing.
Ph Jonathan 027 306 3114

OAKURA AUTOMOTIVE
PANEL REPAIRS • MECHANICAL SERVICES • HIRE CENTRE • WOF

P | F: 06 752 7485 M: 027 544 0005
1 Victoria Road, Oakura Rd 4374
www.oakuraautomotive.co.nz | oakuraautomotive@xtra.co.nz

A new place to shop

A new shop called The Style Corp has just opened in Oakura selling new and pre-loved clothes, jewellery, footwear, art and giftware.

Self employed as a seamstress, Teri Coxhead and business partner Lian Brownson who is an interior designer have been involved in the fashion industry for

over 25 years.

Teri loves to design floral feminine wrap skirts, kimonos and upcycled denim while Lian has perfected stylish comfortable workwear in lighter weights for summer.

We have created a space to not only sell what we make, but to support local creators



Lian Brownson and Teri Coxhead who have opened a shop in Oakura.

to sell their products. We all share the responsibilities and hours of the shop so we still have time to be creative and focus on other businesses and families.

Both have been involved in co-operatives and find they "really work".

The pair who have worked

together successfully for some time, opened a pop up shop in the Escape Coffee Roaster in New Plymouth in July last year which "went great". On Boxing Day they relocated to Urenui for the summer. "That was crazy," says Teri adding they were so well received. "There were lots of campers coming up to the township for a coffee at the local café and having a browse in the shop".

Recently, the pair who both grew up in Oakura though have since lived elsewhere were offered premises in the main street of Oakura opposite Butlers Reef and next to High Tide Cafe.

Teri and Lian are close friends and have worked together for a long time.

It's nice to share the responsibility and organisation says Teri. Lian is currently away with her husband hunting in Fiordland.

The Style Corp is currently

Continued page 17.



Two outfits created by Lian and Teri.

NOW OPEN
Thurs - Sun
10am to 4pm

ORIGINAL & UNIQUE
THE STYLE CORP.
CLOTHING • SHOES
DECOR
STYLED BY US FOR YOU

1136 STH RD, OAKURA | 021 265 2813 or 027 484 5543

GARDEN ART

Your ideas made to order.
A personalised gift?

Coastal Welders
06 752 8138 | 027 255 8677

ALTOGETHER
COVERING THE COAST

It's no surprise that New Zealand's biggest full-service real estate agency is well positioned across Taranaki. We are well stocked with knowledge and passion over all property divisions in our region. Contact Bayleys Taranaki to achieve the best result for your property today.

Angela Sefton
Residential & Lifestyle
027 845 2190

John Blundell
Lifestyle & Farms
027 240 2827

Kellie Hodson
Property Management
027 288 2894

SUCCESS REALTY LTD, BAYLEYS, LICENSED UNDER THE REA ACT 2008



ALTOGETHER BETTER

Residential / Commercial / Rural / Property Services

Connector

Saturday services in December

On December 5, 12, 19 the Connector will provide one return service from Opunake via Hawera through to New Plymouth.

Departing Opunake 9.00am and Hawera i-Site 9.35am.
The return service departs New Plymouth 3.00pm.
Weekday route will apply. Some stops excluded.

Timetables are available from your bus driver and from www.trc.govt.nz/routes

Provided by Pickering Motors Ltd
Ph 0800 26 63 28
TaranakiPublicTransport

Army Band a family affair

Father and son duo Private Leigh Martin and Corporal Raynor Martin have a long connection with both the New Plymouth music scene and the New Zealand Army Band; Leigh's father, Ken Martin, was an army musician during World War II, and his first tuba teacher was former Army Band member Trevor Bremner.

The band has taken the Martins around the world since Leigh joined the Army and the band in 2005 aged 44, and Raynor in 2009.

"I'd always wanted to join the band as a teenager so when there was an opportunity later in my working life I took it, selling up home and business and shifting our family to Christchurch," Leigh said.

In 2009 he left the Army Regular Force - staying in the band as a Reservist - and returned to New Plymouth, where he was Musical Director of New Plymouth Brass until 2019. In late 2019 he transferred back to Christchurch and rejoined the Army as a Regular Force soldier.

Raynor Martin, who played trumpet and cornet, joined the New Plymouth



Raynor(left) with his father Leigh Martin.

Learner Band as a youngster when his grandfather was conductor "so music is in the Martin blood".

Both father and son said

they had been lucky to play throughout the world thanks to the Army Band, including at the Edinburgh Tattoo in Scotland.

"I have been very lucky in my career to perform at many big events. Playing the Last Post at the 100th commemoration of the Battle of the Somme in 2016 and in Passchendaele in 2017 were huge honours," Raynor said.

"And performing for the Queen at her Diamond Jubilee and 90th Birthday Celebrations was also amazing. But the one that sticks out is still marching out the gates of Edinburgh Castle to 9000 people every night for a month at the Tattoo."

Leigh Martin said the opportunity to work alongside his son was "a

real honour", and having a common interest of music and brass band meant they were close.

COVID-19 had changed the Army Band's plans for 2020 but the Martins said there were still plenty of opportunities.

"I feel very lucky in the current climate to have a job in the music industry. Although we are soldiers in the Army, we still strive to be the best musicians we can be and are lucky enough to perform regularly," Raynor said.

A new place to shop

Continued from page 16.

open from Thursday till Sunday from 10am till 3.30pm though they will be extending the days for summer.

Opened just a week, Teri says she's really enjoying it.

"I love it," she says "it's great to meet all the new locals and provide a place for people to shop without having to travel into town" and invites people to come in for a browse and enjoy the experience and support local.

INDEPENDENTLY & LOCALLY OWNED

Eltham

Farm Supplies

178 Bridge St
Ph: 06 764 7003
farmsupplies@elthamtimber.co.nz

STOCK FEEDS + AG CHEM + DIY

GARDENING, CLOTHING & FOOTWEAR

Merry Christmas from the Hareb Deken team

TARANAKI'S 4WD CENTRE - QUALITY AND SERVICE

<p>"Sporty" \$27,990</p> <p>2014 AUDI Q3 2.0 QUATTRO 72km's, Bronze</p>	<p>"NZ new" \$26,990</p> <p>2009 AUDI Q5 3.0 Tdi 1 owner, 76km's</p>	<p>"7 seats" \$27,990</p> <p>2011 AUDI Q7 3.0TDi QUATTRO DSL, Auto</p>	<p>"Stunning" \$51,990</p> <p>2014 AUDI SQ5 V3.0 BI TURBO DSL 78km's</p>	<p>"Full Spec" \$15,990</p> <p>2004 PORSCHE CAYENNE S 4.5 v8 Auto 4WD Mags NZ New</p>	<p>"Superb" \$34,990</p> <p>2014 AUDI Q7 3.0 TDI Quattro, 7 seater, Superb family motoring, SQ7 rims and grille</p>	<p>"Smart" \$7,990</p> <p>2007 BMW 120i 5 door Hatch 109km's</p>
<p>"Luxury" \$12,990</p> <p>2009 BMW 525i TOURING WAGON</p>	<p>"Great spec" \$38,990</p> <p>2012 RANGE ROVER EVOQUE 2.0Si DYNAMIC 85km's</p>	<p>"Clean" \$14,990</p> <p>2009 DODGE JOURNEY 2.8 STX, 7 seats, 115km's Red, Super clean</p>	<p>"Top spec" \$36,990</p> <p>2015 BMW X3 X-DRIVE 2.0D AWD Economy plus</p>	<p>"Value" \$13,990</p> <p>2010 VOLKSWAGEN TIGUAN 2.0 TDI, Auto, 4WD 141km's</p>	<p>"Very rare" \$54,990</p> <p>2014 BMW X3 ALPINA XD3 BI-TURBO DIESEL 13km's</p>	<p>"NZ new" \$27,990</p> <p>2016 CHRYSLER 300C SRT8 6.1 V8, Immac</p>
<p>"Style" \$14,990</p> <p>2007 HONDA CR-V ZL 2.4 4WD 78km's</p>	<p>"Top spec" \$19,990</p> <p>2012 FORD KUGA 2.5 AWD, TITANIUM, LEATHER, 78km's</p>	<p>"Good looker" \$37,990</p> <p>2016 ISUZU D-MAX LX 4WD 3.0 T/DSL 46km's</p>	<p>"Economy" \$18,990</p> <p>2010 LANDROVER FREELANDER SE T/DSL 2.2 NZ new</p>	<p>"Leather" \$47,990</p> <p>2019 MAZDA BT-50 LTD D/C 3.2DSL 2wd, 6km's</p>	<p>"Family" \$14,990</p> <p>2008 MERCEDES-BENZ R 350 4 Matic 7 SEATER</p>	<p>"Economy" \$33,990</p> <p>2012 LANDROVER DISCOVERY 4 3.0 SDV6, T/DSL, Auto, 7 seater, NZ New, All options</p>



St Joseph's Opunake

Principal: Sandra Connor

Phone: 06 761 8388

Email: office@stjo.school.nz

2020.... What a year!!

Although an extremely challenging year for all, it has been one of our most successful on the PTA fundraising front. Here are some of the projects our fundraising efforts are going towards:



Purchasing smart TVs for each of our classrooms to enhance our Tamariki's learning.



Investing in a new Yamaha keyboard for our music department to encourage kids learning a new skill.

- The PTA has funded Kelly Sports for term 4 so our kids had the opportunity to learn important team work, ball skills and healthy outdoor fun
- Planning is underway for our playground makeover. We are hoping this project will be underway early next year
- Funding has been approved for an investment into Robotics. This will be a great opportunity for our children to extend their creative minds.

What's been happening? An update from the St Joseph's PTA St Joseph's Enviro kids planting their way to a greener future

In June our first post COVID fundraising adventure was to the Le Prou Family farm. Our school enviro group kids and parents went out and planted over 1000 riparian plants. It was a great day out teaching our kids about how to look after the water ways and the environment.



Maddie Brown planting riparian plants

Hangi fundraiser

In late August the PTA with the help of many families and local organisations, put on a delicious Hangi. This was St Joseph's first Hangi fundraiser and was very well received. We sold over 320 tickets and had amazing feedback on the quality & portion sizes. We could not have done this without the very generous donations by the school community and local businesses.



Ag Day 2020

It was all sunshine for our annual 2020 Ag Day at school this year. The kids enjoyed showing off their amazing creations and pets. The lamb and calves put on a great show, with a wonderful turnout in all sections. The auction was very successful with all funds raised going toward to upgrading our playgroup for tamariki. This would not be possible without the support of the local businesses. A big shout out to our teachers, Ag day committee, judges and auctioneer who made this an awesome day.



Principal's Update

It has been a pleasure to be part of the St Joseph's School Community for the 2020 school year and what a year it has been it for everyone – who would have thought Covid 19 would have had such impact at the beginning. I would like to thank everyone who has helped us during the year, your continued support of our wonderful school is very much appreciated.

Along with big fund-raising events our wonderful PTA have also provided our children with other smaller opportunities. e.g.: a Fish n Chip Lunch, Actionaki, Book Fair, Class outings, Meet the Teacher at the Pools, Easter raffle, Pie fundraiser, Juices, Slink run, Cookie fundraiser to mention a few. These opportunities don't just happen a lot of hard work goes into them so thank you very much all PTA members you are STARS!

Going forward to 2021: Our school will start on the 2nd of February as a Teacher Only Day will be held on the 1st and a new Principal appointment.

I would like to wish all our School Community and the wider community a very Happy Christmas and new Year.



Juniors out on the new BMX

BMX track for St Joseph's



St Joseph's Opunake is now lucky enough to have a 1 km BMX track which loops around the school. Acting Principal Sandra Connor came up with the idea after seeing how much the kids in her previous school loved it. The school community got involved and it was completed within a weekend.

Mrs Connor secured \$4000 grants from Sport Taranaki and Bike On NZ and together we were able to get 12 new bikes and 100 helmets donated by Bike On NZ, which ensures all of our school children have their own helmets and are able to use the track safely. The track was opened officially and blessed by Father Vui. A big thank you to all those who helped by bringing in machinery and donating countless hours to bring the track to fruition.

Flat track MX fundraiser

In September, the PTA organised an extremely popular motocross flat track fundraiser. This adrenalin fuelled 2-day event was held on a local farm with over 300 riders attending. We catered for everyone with 3 different tracks depending on skill level. This would not have been possible without our amazing sponsors! Special thanks to C & K Lynskey for hosting and Campbell Contracting for sorting the track along with all the other helpers & sponsors.



Young St Joseph's riders out on the MX flat track



Support these amazing businesses who support our school

How to maximise the value of your effluent pond nutrients

Effluent ponds and storage tanks are a significant part to any effluent management system, after all, they're storing all those essential nutrients that will later be used for fertilisation of crops and pastures. However, to truly maximise the value of the stored effluent there's a few things to keep in mind...

Stir well, achieve more

If effluent is left sitting in a pond or tank the solids will inevitably sink to the bottom and crust and debris will form on the top, separating out the essential nutrients. To maximise the value of your effluent it is vital the effluent is thoroughly mixed prior to pumping to ensure a



MICHAEL PRESTIDGE

consistent mix of nutrients is being pumped out and spread evenly over pasture. For farmers monitoring the level of nitrogen and other nutrients in the effluent it also ensures more accurate results for testing and analysis.

Additionally, with a well stirred pond you will also achieve these benefits:

No solids accumulation at the bottom of the pond

There are a number of issues with solids accumulating at the bottom of the pond/tank:

1. As the solids sit at the bottom of the pond/tank they lose their nutrient value, meaning by the time you dig them out to spread you are getting a lot less value from your resource.

2. The accumulation of solids reduces the volume of storage available. In some cases this can become a council compliance issue as most councils will have

minimum requirements for effluent storage.

3. You will eventually need to drain the pond and get a contractor in, or spend time digging out the solids yourself. This can be costly, inefficient, and is less effective than simply stirring well.

Prolongs the life of your pump and irrigator

Thoroughly mixed effluent reduces strain on your pump, and you'll be far less likely to experience blockages. So your entire system is more likely to run smoothly.

Reduced odour

Aerating the pond gets the biology of the pond working which will greatly reduce the odour.

Aesthetics

Everybody wants to have an enviable looking farm, and a well stirred pond is a much better look than crust and vegetation!

Tip: It is essential to stir before pumping so the sediment can be mixed with water. It can be difficult to tell just how much is accumulated at the bottom, and it is too late to mix if

you've already pumped down to the sludge.

Achieving a thorough effluent mix

To create a stirring action that will get the entire pond swirling, you need to create a strong horizontal flow of water with sufficient velocity to carry the suspended solids. A consistent speed of approximately 0.8 metres per second will stop solid particles from dropping out of suspension, and the only way to do this is by creating a strong horizontal thrust. This is where a shore mounted electric stirrer is recommended as they are able to provide the right combination of angle, power and speed to churn up the entire pond.

In the past, floating vertical stirrers were promoted for having low power requirements, however these are not recommended for the following reasons:

1. Having a vertical shaft the solids are merely pushed away from the propeller, and will then slow down and drop out of suspension in the water,

so they never end up being effectively mixed. Moving the stirrer around the pond will only shift the solids from one area to another, so nutrients are not getting mixed in and therefore don't end up leaving the pond.

2. While some floating effluent stirrers may have low power requirements, a lot of the time these need to be run constantly to achieve any results.

3. In terms of safety it is always better to keep electricity out of water, and not have the need for anyone to venture out onto an effluent pond should the stirrer require maintenance.

Another option which has been suggested in the past is using a pump type stirrer. In theory these stirrers should work, however in reality you would need a massive pump, or even several pumps to even come close to what a shore mounted stirrer can achieve.

Michael Prestidge | Nevada
Effluent Management
Specialist

Mega COW 35

ENHANCED DIGESTIBILITY, PROVEN GAINS

What is MEGA COW 35? MEGA COW 35 is palm kernel with 35% feed grade mollasses and added minerals such as Sodium and Calcium to balance the feed for enhanced animal health.

bhl FEEDS
www.bhlfeeds.co.nz

0800 222 707
21 Paraite Road, Bell Block, New Plymouth
PO Box 5054, New Plymouth 4343



Everybody wants to have an enviable looking farm, and a well stirred pond is a much better look than crust and vegetation!

Get results with specialist advice from accredited dairy effluent designers



Trusted for
Safety & Reliability.®

nevada®
Sustainable Nutrient Management

nevadagroup.co.nz | 0800 464 393

Taranaki land suitable for horticulture

Venture Taranaki has released an assessment on Taranaki's land and climate, which provides an overview of our region's growing capability, and the opportunity to help meet long-term goals of building diversity, value, sustainability, and market and supply-chain resilience.

A key finding of the released Taranaki Land and Climate Assessment is that there are around 207,000 hectares of land potentially suitable for generic horticulture within the boundaries of the Taranaki Regional Council.

The eight mainstream crops covered in the assessment include apples, kiwifruit, avocados, blueberries, hops, hemp and CBD cannabis, hazelnuts and walnuts,

potatoes, and wine grapes. "The assessment also highlighted key findings regarding each crop covered. For example, the extra winter chill makes Stratford an ideal location for apples, whereas the entire region is suitable for walnuts excluding Stratford. Avocados are temperature sensitive, however, export could be considered by landowners in New Plymouth, Urenui and Ōaonui, as they meet the required mean temperature." Venture Taranaki Chief Executive Justine Gilliland explains.

Plant & Food Research were commissioned to undertake the assessment as part of Venture Taranaki's Branching Out initiative. Branching Out is a collaborative exercise

to investigate, explore, package, and potentially pilot new commercial opportunities that could add wealth for Taranaki's economy and help the region's food and fibre sector become more diverse, resilient, innovative and in-demand.

During their assessment, Plant & Food Research conducted a comprehensive survey of Taranaki's land, environment and climate databases relevant to the sector and region to quantify Taranaki's untapped potential to support a range of commercial horticultural endeavours.

"Foundational to investigating this potential is to assess and understand the accessibility and quality of the climatic land and

soil data available for the region," says Justine

"The assessment compares the region's differing climates, and focuses on data pertaining to topography, soil attributes, water, and potential land use, particularly looking at the viability of some key New Zealand crops that could have potential for commercially successful growth here in Taranaki," adds Justine.

"Successfully leveraging the opportunities that horticulture presents is about much more than soil, seeds and climate, or simply growing things. Success will be achieved as much by these factors as by people, knowledge transfer, and the emergence of new chains, processing, and products

to deliver these growing opportunities to market," further explains Anne Probert, Venture Taranaki General Manager Regional Strategy and Sectors.

"Taranaki has proven over decades that it has all these components in spades and can adapt to continue to meet market demands over time," says Anne.

"This assessment will be of

interest to those considering opportunities to foster diverse, complementary food and fibre value chains within Taranaki. As the report indicates, there is plenty of potential in Taranaki to increase the share of horticulture for the region's future prosperity and resilience," concludes Justine.

Storey closes chapter

After five years at the Dairy Women's Network Trust Board table Pamela Storey will pull up a chair for the last time, providing an opportunity for a new trustee with a 'fresh perspective' to shape the future of the organisation.

"I think it's important as we go through our governance career, to make space and create opportunities for others," she says.

"After five years on the DWN Board, I feel confident that we've made great strides, particularly in professional development for members, and significant industry influence. I think it's important to identify when you've added the value you intended to add, and allow others to bring different skills or insights to an organisation, particularly as it faces new challenges."

Her journey with Dairy Women's Network began as a member back in 2010, taking part in regional workshops and events, before she attended her first conference in 2012. Previous governance experience across various industries directed her to apply for the trustee position advertised in 2015, as a way to add value to an



Pamela Storey.. Photo Dairy Women's Network.

organisation and industry that she believed in.

"I knew I played a critical role in the success of our dairy business but was challenged to find my place in the dairy industry and in the various primary sector organisations. DWN created a place that I could use my expertise to support, grow and promote a productive food production sector in New Zealand."

Since her appointment in July 2015, Storey's contribution to Dairy Women's Network has been significant, says Dairy Women's Network Chair Karen Forlong.

"Pamela's abilities and

experiences have added many insights around the Board table. She is a courageous contributor to discussions, she can stretch conversations while all along adhering to a purpose. She is a great 'connector' and light heartedly I think there are many within the tribe that have enjoyed her sense of 'fun and excitement' at Conference. While wishing her well in her future roles within Ag we hope to continue to enjoy an evening on the dance floor once a year."

Storey and her husband own and operate a dairy farm in Te Hoe, North Waikato. She is proud to

play a significant role in the industry despite not being "in the cowshed every day," and sees Dairy Women's Network as having room for everyone regardless of their farming experience.

"Whether it's through different roles with DWN, or the various agencies and organisations we engage with, what I love is the recognition that women hold a significant place in the on-going success of the industry," says Storey.

"We all have different skill sets and DWN provides a variety of ways to get involved and engage in a way that suits you as an individual and your unique talents."

Her highlights include events that focus on the rich connection between women across New Zealand, such as the annual conference and the Regional Leadership Forums.

"These are where friendships and support networks are forged, where our eyes are opened to new approaches, new technology and new ways of doing things that ensure our dairy businesses, and us as individuals, can thrive now and into the future," she says.

NZ FARMERS LIVESTOCK

For all your Livestock requirements Servicing the Coast

Contact

Tim Hurley - 027 445 1167

Bryan Goodin - 027 531 8511

NZ FARMERS LIVESTOCK

Merry Christmas and Happy New Year from Tim & Bryan

Tim Hurley - 027 445 1167

Bryan Goodin - 027 531 8511

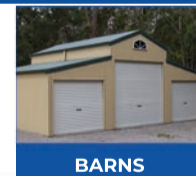


YOUR LOCAL SHED MAKER KITSET OR CONSTRUCTED

GLENN 0272 969 755 TARYN 022 066 7016



FARM BUILDINGS



BARNs



WORKSHOPS

NZ FARMERS LIVESTOCK

For all your Service Bull requirements, Bull Sales & Paddock Sales. Now buying in milk cows.

FOR MORE DETAILS contact your local NZFLL agent

Tim Hurley - 027 445 1167

Bryan Goodin - 027 531 8511



LIME

Cart and Spread or Direct Dump on Farm

Call us today on

0800 432 866

www.fbt.co.nz

Farming Research - Where should the dollars be spent?



EMILY HOUSE

is hugely important in feed conversion efficiency.

While Pat's article focuses on genetics, today the research flavour of the month is Regenerative Agriculture and its ability to potentially reduce and reverse farming's environmental footprint.

While in this case it's not necessarily "farmer funded," the question still remains: Is this a worthwhile use of taxpayer's money? I'd have to agree with Pat Poletti here, it will be for those making the choices to decide. In the meantime,



Plantain and chicory can significantly increase the calcium content of your pasture sward.

there are a number of things we can do to improve the health of our animals and reduce our environmental impact. Whether we farm conventionally, organically or regeneratively is beside the point.

A more efficient animal has a lower environmental impact. Methane emissions from livestock are directly linked to dry matter intake, so the more kgMS or liveweight gain they can achieve per kgDM, the lower their impact will be. Researchers have found that less efficient animals convert more of their energy intake into heat rather than growth or milk production. This relates to thermoregulation which is the process used to control heat production and how the animal partitions energy between keeping warm and growing or making milk.

The effectiveness of the thermoregulatory processes are tied up with two trace elements, iodine and selenium. These are both commonly deficient in NZ pastures. Finding out these mineral levels in your pasture and ensuring your

animals are supplemented to sufficiency year round will be a huge step towards farming more efficient livestock.

A preliminary look into the mineral composition of more diverse pastures (5-20+ species) show promising results for animal health. Sampling of diverse pasture swards, all of which differ with different species composition show some general trends. These

include significantly increased calcium levels. Even if you're not wanting to go down the road of introducing 5+ species, over sowing plantain and chicory in your sward will significantly improve the calcium content of your pastures for better animal health outcomes. Think of the limeflour dusting you could potentially save on!

Where the funding goes will always be the

prerogative of those handing out the money, but we don't need to wait around. There's plenty we can all be doing now to improve farm sustainability and animal health and performance. Including pasture mineral composition in our decision making is the first step.

Emily House
5th Business Agri.

Jersey supreme



Bradley Parkes with Royal Supreme Jersey Champion Parlan Marcel Stellar owned by Johnson and Parkes at the Stratford A & P Show.

We welcome your contributions
Please send to
editorial@opunakecoastalnews.co.nz



Corkill SYSTEMS LTD

5 TASMAN ST, OPUNAKE

FREEPHONE: 0800 107 006 PH: 06 761 7531 - FAX 06 761 7336

Silent Diesel and Industrial Tractor Mount Generators

For Dairy Sheds, Houses, Pump Sheds and Commercial Sites

Tractor Mounts Features:

- Supplied with weather proof cover
- Dials facing cab (one man operation)
- Heavy Duty Driveshaft
- Heavy Duty Construction
- 1000RPM Direct PTO Driven (no gearbox or belts)
- Backup and Repair Service for all Generators



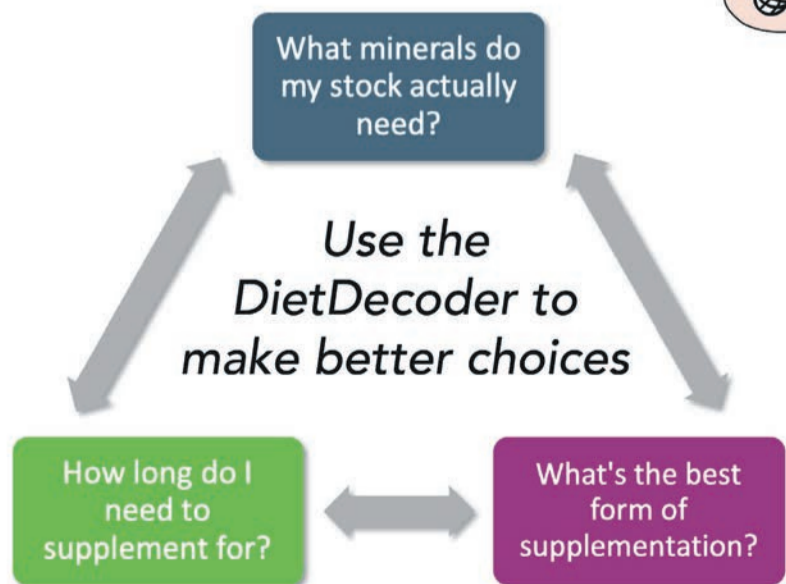
Sizes to suit all situations

A full range of cabling and outlet options to suit your personal requirements



Check out our new website
www.corkillsystems.co.nz

For NZ Farmers Feeding Grass
DietDecoder



Simplify your decision making!
Call us on 0800 765 854 - We'd love to chat
www.5thbusinessagri.nz

Sandfords Manaia Golf results

November 12. Thursday night Ambrose. 1. YTB. 2. Tu Mehe. 3. Symes Team. 4. Half Decent.
 November 14. Saturday Men. 1. Phil Elliott. 2. Logan Symes. 3. Ralph Symes.
 Juniors. South Taranaki Stroke Play Championships held at Manaia. 18 holes. 1st Gross Dillin Plimmer (New Plymouth). 1st Nett. Liam Campbell (Manaia). 1st Stableford. James Smithson

(Strathmore).
 Fill Nine Holes. 1. Jackson Moorhead (Westown). 2. Oliva Symes (Manaia). 3. Riley Otene (Eltham).
 Nine Short Holes. 1. Kian Larsen (Te Ngutu). 2. Kobi Symes Simpson (Manaia). 3. Drej Climo (Manaia) and Destiny Climo (Manaia).
 Six Short Holes. Under 10. 1. Liam Gyde. 2. Wallis Gyde. Under 5. 1. George Stevens. 2. Jackson Gyde.
 November 19. Thursday

night Ambrose. 1. Young Bucks. 2. Tui & Red. 3. Half Decent.
 November 21. Saturday Men's Stableford. 1. Josh Symes. 2. Paul Hunn. 3. Ralph Symes. 4. Craig Jones and Bruce Duffus.
 Juniors. Chipping and Putting. Cody Smyth and Jaxon Symes Simpson all even. Kobi Symes Simpson and Charlie Smyth.
 Junior Ambrose. Hot Shots.



What's On Listings

ONGOING

Movies at Everybodys Theatre in Opunake: Playing several days and nights each week. Refer timetable in newspaper.

MONDAYS: Tainui Day Centre - St Barnabas Church Hall, 141 Tasman Street Opunake: Each Monday 10 am - 12:230 pm. Information call Jenny 7618080 or Glenys 6558025

Opunake Friendship Club: Meeting last Monday of each month in Opunake Town Hall at 1.30pm. All welcome.

TUESDAYS

Opunake Walking Group: Every Tuesday 10am. Meet outside Club Hotel on Havelock St Phone Margaret 027 477 5600 for more info if needed, or just turn up.

Life Drawing Group: Weekly at the Emporium, 86 Tasman St, Opunake 7pm to 9pm. \$10 to pay for the model. Models always wanted; male, female, any age. If anyone is interested please call Marianne Muggeridge on 06 274 5713.

WEDNESDAYS

Lisa Keen Audiology at Coastal Care, Opunake: Wednesdays 9am - 5pm, for an appointment call 027 591 4222 - 0800 555 676

Okato & District Historical Society open every Wednesday: At the Okato Community Trust Hall, 47 Cumming St, Okato. phone Meg on 06 752 4566.

Opunake Embroiders Guild: Meet 2nd and 4th Wednesdays of the month, 10.30am-3pm at the Opunake Business Centre, Napier St, Opunake. Just come along or phone Sheryl 06 761 8769.

THURSDAYS

Coastal Young Farmers: Meet 2nd Thursday of every month at 7pm at the Okato Bowling Club.

Taranaki Country Music Hall of Fame, Manaia: Running every Thursday night from 7.30pm, 11 Surf Highway, South Road, Manaia.

FRIDAYS

Eltham Business Association Friday Markets: 9:30am to 1pm, Carpark of Touch Point, High Street, Eltham.

Singer Songwriters, New Plymouth: Last Friday of the month at Little Theatre, 29 Aubrey St, NP from 7-11pm.

Opunake Bowling Club Twilight Bowls: 5.30pm at the Club.

WEEKENDS

The Historic Cape Light & Museum: Open 11am - 3pm weekends, Bayly Road, Warea.

SEPTEMBER 26 2020 TO FEBRUARY 8 2021

'Home Work' Taranaki Art 2020 Exhibition: At Puke Ariki Museum, New Plymouth.

NOVEMBER 16 TO DECEMBER 18

'Once Upon a Starry Night' Exhibition: At the Village Gallery, Eltham..

DECEMBER 3

Summer of Racing : At the New Plymouth Raceway.

DECEMBER 6

BLUE CHRISTMAS: At St Barnabas Church, 141 Tasman st, Opunake. 7pm.

DECEMBER 7

Opunake Banking Hub Launch : At the Opunake Library Plus, Tasman St, Opunake.

DECEMBER 24

Opunake & District Business Association Christmas Parade: 7pm start.

DECEMBER 27

Summer of Racing : At the New Plymouth Raceway.

JANUARY 7 2021

Take a Kid Fishing : Opunake. more details to follow.

JANUARY 8 2021

Opunake Community Baths pool Party: At the Pool, 5-7pm.

JANUARY 9 2021

Opunake Beach Carnival: At the Beach, 10am-3pm.

Opunake Surf Club Disco: 6.30pm at the Surf Club

Adult comedy with yuletide twist

"A Kick in the Baubles" is the title of New Plymouth Little Theatre's Christmas show which is currently in performance. Written by the British playwright, Gordon Steel, it is an adult comedy and the tickets have been selling so fast, they have opened up another night. Eleven years ago, Little Theatre produced the premiere of it with the same director as this year, Christine King, as well as the three original males in the cast playing the same roles.

Reputed to be adult British comedy at its best. In the Bailey household, Jean just loves Christmas and wants everything to be perfect, while her husband Frank, is as close to being the Grinch as they come. When the snobby in-laws arrive for dinner along with the loud, bawdy neighbour with his sexy wife, Julie, chaos reigns.

It does have its serious moments though. A surprise visitor may bring a lump to your throat.

The eight cast members are John Lawson as Frank, his wife Jean is played by Nicola Bleasel, with Tasha Paton playing her sister



Harry and Doreen from "A Kick in the Baubles"

Doreen, and Kelvin Stephens as her husband, Harry.

Their daughter Alex is played by Michelle Rawlinson. Adam Sedgwick plays two characters, Gary and Darren, with Kaila LeMaitre as Gary's wife

Julie, and Suzy Adair as the 'surprise visitor'.

It runs through to December 12 but you had better hurry if you want tickets as it may be sold out.

Go to littletheatre.co.nz to find out.

On this month in history

NZ involvement in Vietnam War ends

On December 11, 1972 Prime Minister Norman Kirk announced the end of NZ's military involvement in the Vietnam War. He said the last of the soldiers would be home by Christmas.

A total of 37 New Zealand servicemen and women had been killed, all but one of

them army personnel. (one airforce person lost his life).

The NZ involvement used volunteers in the Vietnam War, unlike Australia where conscripts were sent.

Supporters of this war subscribed to the domino theory - if we don't stop the Communists there, they

will roll down further south and invade more southern regions. That was almost 50 years ago and we are still waiting!

Mr Kirk also ended peacetime conscription and no government since has re-introduced it.

Kiri Te Kanawa debuts at Covent Garden

On December 1, 1971 soprano Kiri Te Kanawa made her debut at Covent Garden, London. Aged 27, her role was as the countess in the Marriage of Figaro.

She became a leading soprano in the world in the 1970s and 1980s. Famously, Prince Charles asked her to sing at his wedding to Lady Diana Spencer.

Our next issue is due out Dec 17 2020. Contact us now on 06 761 7016 if you would like to be in it

Deadlines for contributions for our last issue of the year is December 9.

CALL OUR FRIENDLY SALES TEAM AT THE

OPUNAKE & COASTAL NEWS

23 Napier St, Opunake

06 761 7016

See how our high readership rate can work for you

GET YOUR LAWNMOWER & CHAINSAWS SERVICED HERE!

We service all types of LAWNMOWERS, BIKES, CHAINSAWS & RODS & REELS

STARTING PROBLEMS? NOT ANY MORE...

HP AND LAYBY AVAILABLE

FREE PICK UP AND DELIVERY IN OPUNAKE & MANAIA

SYMES OUTDOOR & SPORTS LTD

Tasman St, Opunake | Ph 06 761 8778

All youth cast stages Buggy Malone



began singing at age 11 and has danced for as long as she can remember.

Josh has sung and acted but is not a trained dancer. "I was always optimistic that it would happen, I was just waiting for it to restart. It's a great concept," he says. While a little nervous about dancing on stage, he's choosing to focus on each part of the process as it comes.

"We'll jump that hurdle when we reach it."

The gap in development and production has allowed Hawera Repertory Society to ensure they can successfully stage the show during Covid-19 levels 1 and 2.

Society president Ron Scott says they will be taking every precaution to ensure the safety of the cast, crew, audience and musicians. "We're really lucky here. That isn't the reality for many places. We've just successfully finished staging God of Carnage and we know this will work too."

Tickets for Buggy Malone will go on sale on Thursday 26 November 2020 from iTICKET.co.nz or at the Hawera iSITE.

A slapstick musical comedy about street gangs and washed-up boxers set in a prohibition-era speakeasy is the next offering from Hawera Repertory Society.

Buggy Malone will hit the Hawera Memorial Theatre stage in February 2021, a full year after the youth cast first began rehearsals.

"We're so pleased we can put this show on. We stopped production and indefinitely postponed rehearsals back in March 2020 and to be honest we weren't sure we'd be able to resume," says Samantha Turner, director.

The cast and crew were not willing to fully cancel the show and agreed to reassess things later in the year. They returned in early November and are making the most of the opportunity to start over.

"There's an absolute embarrassment of young talent in this district and after we did Annie last year, we were eager to offer something that could really give the youth an opportunity to shine," Turner says.

The talent extends to the production team too - there are youth assistants assisting with choreography, musical

direction, sound, properties and stage managing alongside each of the department heads. The show also features a live youth band.

Buggy Malone is played by Josh Bird, a year 12 Hawera High School student. His love interest Blousey Brown is played by Abigail Landsborough. Abigail heads away to university almost as soon as the show ends.

They are the leads in a 40-strong youth cast aged 11 to 18 years old. They will all sing, dance and act. Abigail says the show will be her farewell to the Hawera Repertory stage as she focuses on her studies.

They both first performed for Hawera Repertory in the 2013 production of The Wizard of Oz.

"Blousey's just moved to the city, she's looking for a job, she's kind of shy but also strong-minded," she says. "We finish shows on the Saturday and I move into my hall on the Sunday. I was really excited to hear we were going to go ahead before I left. I'm doing a Bachelor of Arts majoring in Education and Psychology and French so it's going to be busy. Later in life I'll come back to the stage though."

Abigail is using her acting, singing and dance training in her role as Blousey. She

WHERE ELVIS LIVES!
ELVIS PRESLEY MUSEUM
 K.D's 50s & 60s Private Museum

Come and see our incredible collection of Elvis records and memorabilia.

Ph. 06 278 7624 | 027 498 2942
 Email: contact-us@elvismuseum.co.nz
 51 Argyle Street, Hawera

IT IS ESSENTIAL TO PHONE FIRST PLEASE

CLOSING DOWN SALE

30% off all Shrubs

Sale

continues on hedging and shelter trees

Includes:
Banksia, Norfolk Island Hibiscus and Pohutukawa

NEW LIFE NURSERY
Growing on the Coast for the Coast
 183 Tasman Street, Opunake | Ph. 06 761 8067 | www.newlifenyursery.co.nz

Entry form for Opunake Christmas Parade 2020.

Please type or print legibly

Name of entry

Type of Vehicle Length (mtr).....

No of Adults No of Children.....

Responsible person

Contact Number.....

Email address

Rule acknowledgement

My printed name or signature below is my bond that I understand the rules and guidelines for the Christmas parade and warrant that my/our entry will fully comply.

Name or signature.....

Please email this to greencow62@gmail.com

or drop into Aretha Lemon @ CoastalCare, 26 Napier St Opunake.

For further info: call Clem Coxhead 06 761 7082 or 027422389

Opunake and District Business Association

Presents

Opunake Christmas Parade 2020

Thursday 24th December. Gather from 6-30pm onwards for 7pm start.

Assemble on Layard street from Tasman street down towards the Rest Home.

Please be prepared for judging from 6-30pm as prizes will be awarded this year at 6-50pm outside Opunake Players, Winners will be given a flag to show on the parade.

Prizes are awarded based on

- 1/ Best effort
- 2/ Most creative

Please review the parade safety rules and guidelines below and retain for your records.

- 1/ Parade officials will inspect all entries and reserve the right to eliminate any entry that is in violation of these rules.
- 2/ The Parade will start at the Tasman street and Layard street corner and end again at that corner.
- 3/ No one may leave or enter your float once the parade has begun.
- 4/ Please cover all open wheels for safety so marchers cannot snag clothing or be pulled under wheels.
- 5/ Your entry may not exit the parade before it is ended.
- 6/ No Alcohol is allowed.
- 7/ For the safety of the public we ask that no items be thrown from your entry.
- 8/ All motorized vehicles must have wheel watchers (people) on both sides.
- 9/ All entries must have clear identification.
- 10/ Changes in the parade line-up on the day of the parade will be made at the sole discretion of the parade officials.
- 11/ A representative must make themselves known to official (Clem Coxhead) on arrival

Entries must be received by December 17th



A Christmas Gift from Bob



Bob and his real-life Dad – James Bowen (The Big Issue:online edition)

Screening at Everybody's Theatre on Saturday 5 and Sunday 20 December at 7 pm.

Starring: Luke Treadaway, Anna Wilson-Jones, Kristina Tonteri-Young, Bob the Cat as himself. Director: Charles Martin Smith. Writer: Gary Jenkins

So, last Sunday we had our Volunteer Thank You day at Everybody's Theatre. The Trust provided a lovely cheese board and screened a movie, which is always a surprise. This year it was A Christmas Gift from Bob. Well, what a tearjerker. It's the sequel to A Street Cat Named Bob, based on a true story, and is one of those movies that just sticks with you. Don't worry if you haven't seen the first one, the writer does a very good job of creating a story that's not reliant on the prequel.

To truly know the company of an animal is a gift in itself. Let alone if you've been homeless and struggling with addiction. Luke Treadaway does a stellar job as James, the ex-homeless guy that Bob the cat has adopted. Treadaway researched his character thoroughly, even sleeping a few nights on the streets before starring in A Street Cat Named Bob. He also busked as a homeless (looking) guy, and was astounded at the amount of people who would not even acknowledge him.

The opening scene is through Bob's eyes. It's a great viewpoint, and adds to the feeling of anticipation. This feeling is carried into the movie as James interacts with different people, leading the audience to believe each time that this is it – this is his big break. Talented Ruth Sheen, famed

for her roles in Mike Leigh films, plays a wonderful character; a hardcore fan of Bob's. She attends most of his street concerts and knits him the most fabulous outfits. Her contribution to a petition, to help keep Bob with James, is most revealing. Bob reaches into hearts, and instils his own self-assurance in those that need the courage to carry on. Several scenes could've been better executed, an early flash-back, and a fade to scene right at the end. Otherwise, a thoroughly enjoyable hour and thirty-two minutes. The messages are simple, but necessary,



and everyone should take note. This is real-life on the big screen. Bob plays himself in most scenes, other cats cast as him were not keen to ride around on the shoulders of James. Bob would happily jump from his real Dad to his actor Dad for the shot, and back again. Such gifted actors too, and Bob with no formal training.

Sadly, Bob's time was up on June 15 this year, he was hit by a car. Bob had gone missing a few days earlier. He had been found less than half a mile from his home and taken to the local vet, who then contacted James. Bob had been living with stage 2 kidney disease, "we were managing his condition well and I think he would have lived for another year or two. I'm just so sad that he hasn't been able to enjoy his retirement in full. I miss him so much." - James (moderncat:online edition).

Make a trip to Everybody's Theatre and pay tribute to the legend Bob who made such a difference to so many lives, especially James'.

Jane Forkert

Once upon a Starry Night at the Village Gallery

The Village Gallery's latest exhibition 'Once Upon a Starry Night' runs from November 16 until December 18 in Eltham and features work from their members. The first thing that impressed me was the amazing array of colour.

There is a comprehensive range of art including paintings (acrylic, watercolours and oils), mixed media, pottery, pastel, weaving and photography. One entry in the visitors' book summed it up "a great selection."



Right: Hidden Beauty by Ashlee Robinson

Continued on pg 26

CoastalCare
Haumaru ki Tai
Health and Community Centre
Haumaru ki rungo, Hauora ki raro

Haumaru ki Tai Health and Community Centre
Delivering essential community health and social services now and into the future....

Some of the regular services we currently have running are:

- TARANAKI OSTEOPATH**
Every 2nd Tuesday
- TAYLOR DENTAL PRACTICE**
Offering full dental services every Thursday
- LISA KEEN - AUDIOLOGY**
Every Wednesday
- NEW PLYMOUTH PHYSIOTHERAPY**
Every Tuesday and Friday
- TARANAKI PODIATRY**
Every 2nd Wednesday of the month
- BROWNING & MATTHEWS OPTOMETRISTS**
Every 2nd Thursday
- MIHI'S PLACE**
Every 4th Thursday of the month
- COUNSELLING SERVICES**
Various providers and specialties including, anger and violence, relationships, drugs, alcohol, quit smoking.

Permanently residing in the building are:
OPUNAKE PHARMACY,
OPUNAKE MEDICAL CENTRE,
ST. JOHNS AMBULANCE,
PLUNKET,
HEALTH BOARD SERVICES,
COASTAL PRINTERS

For a full list of Services and happenings here at CoastalCare

Find us on Facebook

or visit us at www.coastalcare.co.nz
CONTACT ARETHA LEMON
Facility Manager on 06 761 8488

DID YOU KNOW?
CoastalCare offers for hire, quiet, private, well-appointed room's for meetings, training opportunities and social gatherings.

EVERYBODY'S THEATRE OPUNAKE

72 Tasman Street, Opunakē - www.everybodystheatre.co.nz - Phone 027 3837926
DECEMBER 2020
Adults \$10, Students 4-16yrs and Senior Citizens \$8, Under 4 free

<p>THE WAR WITH GRANDPA Comedy, Family 1hr 34mins PG Sat 19th Dec 1pm</p> <p>100% WOLF Animated, Family 1hr 35mins PG Sat 5th Dec 1pm Fri 18th Dec 1pm</p> <p>COMBAT WOMBAT Kids, Family 1hr 51mins PG Sat 12th Dec 1pm Wed 23rd Dec 1pm</p> <p>ONWARDS Family, Adventure 1hr 42mins G Wed 16th Dec 1pm Thursday 24th Dec 1pm</p> <p>FATMAN **BOUTIQUE** Documentary, Music 1hr 40mins M Sun 6th Dec 7pm Sat 12th Dec 7pm</p>	<p>RAMS Drama 1hr 59mins PG Fri 4th Dec 7pm</p> <p>A CHRISTMAS GIFT FROM BOB Family 1hr 32mins PG Sat 6th Dec 7pm Sun 20th Dec 7pm</p> <p>THE COMEBACK TRAIL Comedy, Action 1hr 44mins M:Violence, Language Fri 11th Dec 7pm Sat 19th Dec 7pm</p> <p>MISBEHAVIOUR Comedy, Drama 1hr 46mins M Language Sun 13th Dec 7pm Sat 26th Dec 7pm</p> <p>BROCK: OVER THE TOP Documentary, Sport 1hr 44mins M:Language Fri 18th Dec 7pm</p>
---	--

Tickets for our 100year celebrations in February 2021 are now onsale – check out our website to purchase

UPSIDE DOWN

E A T E R Y

MAKE EVERY DAY DELICIOUS

Gatherings, Christmas functions, End of the Year events etc.

We cater for all events from shared platters to buffets and plated meals! Try our new "Party Platters".

Also available for takeaway

Book your table for our famous Christmas Day Buffet with live music \$89 p.p.

See the menu on our home page: www.upsidedown.kiwi
Call 06 278 8318, email: www.upside-down.co.nz
Follow us on Facebook

Rainforest Eatery welcomes visitors at Pukeiti

The restaurant at Pukeiti is under new management and has a new name, Rainforest Eatery. Graeme Cawsey took over on September 25. Graeme is blown away by the sheer beauty of his new work environment at 2290 Carrington Road, which is just a scenic bush clad drive of 23.4 kms from New Plymouth, by the most direct route. "This is a majestic place. It is also unbelievably well set up. The kitchen is so practical and useable. There is plenty of space and storage."

Graeme also has another food venture in Stratford which he co-owns with a relative.

Rainforest Eatery is open seven days from 10am to 4pm, with an extensive menu which caters for all tastes and needs. "We cook from scratch, with an old school approach," Graeme explains.

The restaurant has plenty of well-spaced seating and looks out on Pukeiti's remarkable collection of rhododendrons, camellias, azaleas, as well as many native trees.

Graeme is enthusiastic about his staff, who ensure



From left, Sophie Warner, Graeme Cawsey, Yvette Santos and Brooke Sorensen.

visitors are well cared for and well fed, "I've got an absolutely amazing team." He adds, "They give off a positive energy."

The huge menu blackboard behind the counter is impressive with a wide ranging selection including

gluten free options. Vegan and vegetarian preferences are certainly catered for and the eggs are free range.

A selection of their Breakfast (10am-midday) menu Vegetarian Big Breakfast, Eggs Benedict, American Pancakes and the traditional Big Breakfast.

Later on in the day, visitors can enjoy Steak Sandwiches, Thai Beef Salad, Bacon Butties and Popcorn Chicken to mention just a few.

There is a huge range of drinks from barista

coffee and teas, to natural smoothies. There are even dairy free milkshakes.

The cabinet has mouth-watering possibilities such as citrus slice, caramel crunch, steak red wine mushroom pie and waldorf salad. The yummy looking muffins include both blueberry and savoury. The cheese and onion scones look most tempting.

Many items can be purchased from the small shop including books, honey, greeting cards, jewellery, ponchos, bags, art prints, natural insect repellent and souvenirs.

The premises has a positive restful ambience enhanced by the recorded music, which, Graeme explains, features the 60s, 70s and 80s.

After lunch a stroll through Pukeiti is a must, which extends for 360 hectares (900 acres) and has a staggering 1,250 rhododendrons as well as many other species of shrubs and trees.

Once upon a Starry Night at the Village Gallery

Continued from pg 25

The contributors include such well-known artists as Karen Waterson, Sue Morton, Pauline Richmond, Ashlee Robinson, Lorna Davies and Ian Littlewood.

The quality of the art on display was excellent and the prices affordable, so with Christmas looming here is the chance to buy some original art as a present for loved ones. Keep in mind, however, the Village Gallery is open 10am to 3pm Monday to Saturday (Closed on Sundays). The address is 166 High Street, Eltham.

Some of the exhibits that caught my appreciative eye were Ashlee Robinson's Hidden Beauty a fascinating

abstract in acrylic which one could gaze at for ages at the pastiche of faces, birds, ferns and tikis within a myriad of colours.

Karen Waterson's acrylic painting In the Roar features a deer in the wild, using vivid colours also stands out. Pauline Richmond's beaded embroidery was impressive. Sue Morton's photograph of Invergordon Mirror was intriguing. Ian Littlewood's country Homestead in pastel was richly interesting.

Make sure you find time to visit this very worthwhile exhibition to choose some original art for someone special in your life.

Festival of Lights is coming



Left: Reb Fountain is one of the many acts you can see at the Festival of Lights this December. More information about the Festival of Lights in the next issue.

Photo: Frances Carter

BLUE CHRISTMAS

ST BARNABAS, 141 TASMAN St, OPUNAKE
SUNDAY DECEMBER 6 7pm

If you have lost a dear one, a job or having a difficult time. Please come along.

Beaches - Gardens - Cafes - Restaurants - Walkways - Accommodation - Art

Awesome Opunake

Play, Stay and Enjoy



COASTAL PLAINS BOARD

OPUNAKE & DISTRICTS BUSINESS ASSOCIATION

OPUNAKE THEATRE

OPUNAKE BEACH CARNIVAL

Pub Charity Limited

UPCOMING EVENTS

- **OPUNAKE XMAS EVE PARADE** 24 December 7pm
- **EVERYBODY'S THEATRE XMAS EVE CHILDRENS MOVIE** 24 December 1pm - Visit their website for all listings.
- **OPUNAKE BEACH CARNIVAL** 9 January 10am - 3pm Free Entry, includes Miss Opunake Pageant & Mr Muscles, The Big Dig, Raffles, Music, Food & Activities for all ages! www.opunakebeachcarnival.com
- **TAKE A KID FISHING DAY** Thursday 7 January. Sponsored by and registrations at Symes Outdoor and Sports. Call 06 761 8778 to register.
- **OPUNAKE COMMUNITY BATHS POOL PARTY** Longfellow Road, Friday 8 Jan 5-7pm
- **OPUNAKE SURF CLUB DISCO** Saturday 9 Jan 6.30 - 8pm at Opunake Beach Surf Club

Our supporters are:

Raybern Entertainment	Fabulous Flowers B & B	Karams Clothes on the Coast	Taranaki National Art Awards	Get Fit 45
Opunake Lakeside Lions	Michelle Hofmans - First National	Pastimes Toys and Gifts	Opunake and Coastal News	Retro on 45
Opunake Auto Repairs	Fish, Chips and More	Country Connections	Sinclair Electrical & Refrigeration	Actionaki
Happily Equanimous	Viv Scott, McDonald Real Estate	Opunake Beach Holiday Park	From Out of the Blue Gallery	Indian Tadka
Holistic Therapies	Taranaki Chamber of Commerce	Taranaki Building Ltd	Brown Bach Gallery	The Emporium

Presenting: → → → 16 November to 18 December 2020

Once Upon a Starry Night

A Christmas Exhibition

by Members of the Village Gallery

THE VILLAGE GALLERY - 166 HIGH STREET, ELTHAM - Supported by

OPEN 10.00 am to 3.00 pm daily, except Sundays

Rainforest Eatery

FRESH + LOCAL + DELICIOUS

Open - 10am to 4pm
at Pukeiti - 2290 Carrington Rd - New Plymouth

Open every day through until March (except Christmas Day)
Mar to May - Wed to Sun, June to Sept - Fri to Sun (+ public holidays)

☎ 06 752 4143 📍 Rainforest Eatery ✉ rainforest.eatery@trc.govt.nz

TRADES & SERVICES

P.D. FLEMING LOGGING LTD

Forestry rigged & certified 33 ton loader, National Certificates in Forest Operations, Health & Safety approved. Free assessment on what your trees are worth \$\$\$

Ph: Paul

027 630 9922 or email: paulflems@gmail.com

McNEIL DECORATING – for all your painting and decorating. Ph: Jason McNeil 027 233 4584.

HCL BUILDERS for alterations. Ph 027 236 7129.

COASTAL GIB STOPPERS. Phone Glenn 027 524 5745

LAWNMOWING, and section maintenance by local contractor SOS. Free quote. Ph 027 605 8437.

FREE REMOVAL for unwanted complete cars. Phone Brian 020 413 77986.

HCL BUILDERS for building houses. Ph 027 236 7129.

CARPETS second hand, large selection After Disaster Ltd 223 Devon St West, NP. Phone (06) 769 9265

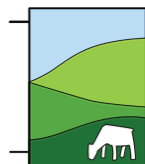
FOR SALE

CLOSING DOWN SALE: 30% off all shrubs. Banksia, Norfolk Island Hibiscus, Pohutukawa and more hedging and shelter trees on sale. new Life Nursery, 183 tasman St, Opunake. Ph 06 761 8067.

WHY NOT GIVE a healthy gift at Christmas? Many older people come into the store and can't afford to take the vitamins they need, so how about giving Mum and Dad an immune boost for Christmas. At The Health Shop in Centre City 06 758 7553.

WE HAVE LAVA lamps, Himalayan salt lamps, Ultra sonic diffusers, good range of aromatherapy oils, Selenite lamps. Come in and have a look, at The Health Shop in Centre City.

GRAZING



NEW ZEALAND GRAZING COMPANY LIMITED

Grazing available

For Weaners and Yearling heifers on a long term contract

Ph Richard

027 510 9667

WANTED TO BUY

SCRAP METAL - for all scrap metal Taranaki wide, give us a call. Molten Metals (06) 751 5367. www.moltenmetals.co.nz

HOUSE or bare block/section. Anything considered. Ph 022 013 0024.

PUBLIC NOTICES



Sth Taranaki Creative Space

Student Exhibition & Chester Borrows
Closes 24th December

All Welcome
6 Union St, Hawera
Open Mon-Fri 10am-4pm, Sat 10am-1pm

CHURCH NOTICES

Opunake & Okato Co-operating Parish CHURCH SERVICES

St Paul's Opunake Co-op & Rahotu Opunake Cooperating Parish St Pauls, Havelock St 9.30am every Sunday and the Rahotu - Wesley - 11am first Sunday of the month Oakura - St James - 10am, 2nd & 4th Sundays Okato - St Pauls - 10am, 1st & 3rd Sundays

Opunake Catholic Church

St Martins, Pungarehu: 8.30am every 2nd and 4th Sundays of the month
Our Lady Star of the Sea, Opunake: 10am every Sunday
Other areas
Manaia - Sacred Heart - 1st, 3rd Sat at 5pm (2nd, 4th & 5th Sat at Hawera's St Josephs)
Kaponga - St Patricks, Sunday 8.45am
All welcome

St Patricks Catholic Church, Okato

Saturday Vigil 6.00pm - 1st, 3rd & 5th Saturdays

The Wave

Pentecostal Church 64 Domett St, Opunake
Sunday Services 10.30am
Women's Group 10.30am Tuesday
Men's Group 7pm Wednesday
Come along or contact Murray Baylis 027 218 3377

St. Barnabas Anglican Church

141 Tasman St, Opunake
Sunday Services 10am
Communion 2nd, 3rd & 4th Sunday
Prayer & Praise 1st Sunday
Every 5th Sunday all 4 churches gather for a Combined Service

Okato Community Church

Meets 10.30am Sunday at Hempton Hall. Everyone welcome

Next Meeting is on December 7, 2020 at 5.30pm
Hughsons & Associates Boardroom at the Opunake Business Centre, 23 Napier St, Opunake (opposite the Coastal Care Medical Centre)

Local news, Local people, local businesses, local sport, local arts and events. Delivered free around the mountain every fortnight.



OPUNAKE & COASTAL NEWS
06 761 7016



PUBLIC NOTICES

Manaia's Lions Santa Parade
Saturday, 19th December



Parade at 12 noon

Proudly presented by Manaia & District Lions with generous support from The Taranaki Coastal Community Board

Coastal Ladies motorcycle ride



Last Sunday of every month. Starts February 2021.

Meet at the RSA in Hawera at 10am.
Please phone 021 065 8373 if interested.

OPUNAKE & COASTAL NEWS



Our Christmas Edition and Holiday Guide will be out on the 17th of December.



The deadline if you would like to wish your customers and clients a Merry Christmas or feature your business in the Holiday Guide is December 9. Get in touch with us now!
Email: ads@opunakecoastalnews.co.nz
Ph: 06 761 7016

BUSINESS PROFILE

THE HEALTH SHOP MORE THAN JUST A RETAIL OUTLET

Centre City's Health Shop is more than just a shop. It hosts a clinic offering Bowen Therapy, naturopathy, and hair analysis for dietary advice. This, alongside 90-plus combined years of 'health wisdom' gained from the formal training and life experience of its 5-strong team. But since Lockdown business owner Rachael Nielsen has seen a drop in instore sales due to online trends.

"We've dedicated years to maintaining up-to-date knowledge to share with customers - that sharing can't happen authentically online," says Rachael.

Rachael's Bachelor of Nursing backs her team's customer service approach.

"We can't diagnose conditions, but we support treatments. If you have a serious condition you need to be aware of contraindications - detrimental effects that result from combining certain medications with supplements. Online shoppers often overlook this," says Rachael.

There are also subtleties vital to consider with health product purchase, often only discovered speaking with someone knowledgeable.

The Health Shop's supported generations of local families - Rachael recently helped a young man with severe bowel problems. "I offered him a tailored programme and he's doing really well," she says.



We're about helping people improve their health - it would be a real irony if we had to close due to the online impacts of a worldwide health issue!" says Rachael.



THE HEALTH SHOP
in Centre City

a. Shop 18, Centre City, New Plymouth
p. 06 759 4342 or 0274 345 680 e. healthshop36@extra.co.nz



meritcars

with distinction

VISIT WEBSITE MERITCARS.CO.NZ

493 DEVON STREET EAST, STRANDON, NEW PLYMOUTH
CALL US TODAY 06 281 1925

FROM \$0 DEPOSIT FINANCE T.A.P.

ALL ON ROAD COSTS INCLUDED PLUS TANK OF FUEL. ONE STOP SHOP FOR FINANCE, WARRANTIES & FREE SMILES

2017 HONDA JAZZ RS SPORTS
NZ NEW Auto Top Grade
39km
\$19995



2013 FORD KUGA TITANIUM 4WD
2.5 Turbo Auto, Higrade,
Moonroof, 50km
NOW \$22,995



2011 NISSAN DUALIS 20G
CROSSRIDER
2.06sp Auto, Beautiful, Easy Access,
Easy drive, 78km
ONLY \$17,995



2011 MAZDA AXELA SPORTS:
2.0 Auto Higrade
61km
\$14995



Many other AXELAS available.

2009 MITSUBISHI OUTLANDER 2.4G
4WD (7 Seater): 6 Sp Auto,
Very Low kms 42km
Was \$18,995 **NOW \$15,995**



THIS WEEKS SPECIAL



2011 MAZDA DEMIO
GLX 1.5
Auto alloy wheels,
78km
ONLY \$11995

- CLEARANCE OF QUALITY VEHICLES
- 4 YR WARRANTIES AVAILABLE
- SUPPORT LOCAL
- TRADE & SAVE
- VEHICLES GROOMED AND CLEANED TO COVID STANDARDS

2012 NISSAN TEANA 250XL
Auto, Higrade, 66km,
\$13995



2008 FORD TERRITORY TX
AWD 7 SEATER (NZ NEW) Auto
SPECIAL PRICE \$9995



2010 SUZUKI KIZASHI GLXC 2.4
(NZ NEW) Auto, Higrade,
Towbar, Alloy Wheels
ONLY \$7995



2007 MAZDA CX7 SPORTS
CRUISING
2.3 Turbo, 6 Stage Auto, Leather,
active cruise control, Low kms
Was \$12,995 **NOW \$10,995**



2007 HOLDEN CAPTIVA CX DIESEL
AWD
2.0 Auto, 7 Seater, Low Kms
Only \$9,995



2010 HOLDEN BARINA HATCH
1.6 5sp 85km
ONLY \$9995



2005 TOYOTA WISH 2.0
7 SEATER. Auto, Only 82km
SPECIAL PRICE \$7995



VEHICLES ARRIVING DAILY - SEE ONSITE SPECIALS FROM \$3,000
OR VISIT MERITCARS.CO.NZ

**GRAB
A BARGAIN**



LOCALLY OWNED & OPERATED

Ph 06 281 1925 • Chris Elliot 027 471 5972
Ph 06 757 3585 • Paul Butler 027 449 5382